

TENDER BULLETIN

NO. 37/2016/17 FY

15 DECEMBER 2016



LIMPOPO

PROVINCIAL GOVERNMENT
REPUBLIC OF SOUTH AFRICA

Provincial Supply Chain Management Office

TABLE OF CONTENTS

| | Page No. |
|--|----------|
| 1. REPORTING FRAUDULENT AND CORRUPT ACTIVITIES..... | 03 |
| 2. INSTRUCTIONS..... | 04 |
| 3. BID INVITATIONS FOR SUPPLIES, SERVICES AND DISPOSALS | 05--06 |
| 4. ERRATUM..... | 07--08 |
| 5. AWRDED BIDS | 09 |
| 5. CANCELLED BID | 10 |
| 6. SPECIAL NOTICES..... | 11--12 |
| ANNEXURE 1: ADDRESS LIST AND CONTACT DETAILS: PROVINCIAL DEPARTMENTS..... | 13 |
| ANNEXURE 2: ADDRESS LIST AND CONTACT DETAILS: PUBLIC ENTITIES..... | 14 |
| ANNEXURE 3: ADDRESS LIST AND CONTACT DETAILS: PROVINCIAL TREASURY TENDER ADVISE CENTRES | 15 |
| ANNEXURE 4: ADDRESS LIST AND CONTACT DETAILS: SATELLITE OFFICES | 16 |

REPORT

FRAUDULENT & CORRUPT ACTIVITIES ON GOVERNMENT PROCUREMENT SYSTEM

National Anti-Corruption @ 0800 701 701

Security and Investigating Services – Limpopo Provincial Treasury @ 015 298 7196

ALL COMPLAINTS/CONCERNS RELATED TO SCM NON-COMPLIANCE MUST BE REPORTED TO:

LIMPOPO PROVINCIAL TREASURY

PRIVATE BAG X 9486

POLOKWANE

0700

PROVINCIAL TREASURY, FINANCE HOUSE, 56 – 58 PAUL KRUGER STREET, POLOKWANE

2. INSTRUCTIONS

1. Bidders are advised to read the entire tender bulletin.
2. Tenders for procurement of supplies, services and disposals are categorized as follows:

SUPPLIES

- Accommodation, leasing of
- Audio visual equipment
- Building material
- Chemicals: Agricultural/Forestry/
- Laboratory/Water Care
- Clothing/Textiles
- Computer equipment
- Computer software
- Electrical equipment
- Electronic equipment
- Furniture
- General
- Medical
- Office equipment: Labour-saving devices
- Perishable provisions
- Stationary/printing
- Steel
- Timber
- Vehicle (all types)
- Workshop equipment

SERVICES

- Building
- Civil
- Electrical
- Functional (including cleaning-,
- and security services)
- General
- Maintenance of electrical, mechanical
- equipment and plumbing
- Mechanical
- Professional
- Repair and maintenance of vehicles
- Transport

DISPOSALS

- Clothing and textiles
- Furniture
- General
- Scrap metal
- Vehicles

3. Bid documents are generally available in English only.
4. The address where a bid document is available from and where it must be submitted to may differ.
5. The addresses at which bid documents may be obtained and to which tenders must be posted, appear in Annexure 1.
6. The address list of various Supply Chain Management Advice Centres at which bid documents and tender bulletins may also be obtained, appear in Annexure 3; and
7. The address list of Supply Chain Management satellite offices at which tender bulletins may also be obtained, appear in Annexure 4.

3. BID INVITATIONS FOR SUPPLIES, SERVICES AND DISPOSALS

| BID NO. | DESCRIPTION OF SERVICE OR SUPPLIES | CONTACT DETAILS | BID DOCUMENT PRICE (NON-REFUNDABLE) | DUE AT 11H00 | BID DOCUMENTS OBTAINABLE FROM | POST OR DELIVER BIDS TO |
|--------------------------|--|---|-------------------------------------|--------------|----------------------------------|-------------------------|
| | | | | | See Annexure 1 & 2, Page 13 & 14 | |
| LTA006-16/17 | <p>Appointment of service provider to do organizational design and restructuring</p> <p>Compulsory Briefing Session</p> <p>Date: 23/01/2017 Venue: Limpopo Tourism Agency's Offices Time: 09H00</p> <p>Limpopo Tourism Agency</p> | <p>BIDDING PROCESS Chris Ramoshaba @ Tel No: 015 293 3600 Email Address chrisr@golimpopo.com</p> <p>TECHNICAL ASPECTS</p> <p>N/A</p> | R80-00 | 03/02/2017 | 113 | 113 |
| EDDP 750 (LPEDT/03 2016) | <p>Construction of boys and girls residences at Dendron Primary School at Molemole Local Municipality</p> <p>CIDB GRADING: 5GB or HIGHER</p> <p>Compulsory Briefing Session</p> <p>Date: 10/01/2017 Venue: Dendron Primary School Time: 11H00</p> <p>Department of Education</p> | <p>BIDDING PROCESS Mr. MD Mahlatji @ 015 290 7666 and Email Address: Mahlatjimd@treasury.limpopo.gov.za</p> <p>TECHNICAL ASPECTS Mr. S Nkuba @ 015 290 7906</p> | R330-00 | 20/01/2017 | 104 | 104 |

| | | | | | | |
|------------|--|--|--------|------------|-----|-----|
| HEDP806/16 | Supply, delivery of aluminum poster holders with stands to institutions of the Department of Health Limpopo Province for period of three years. Department of Health | BIDDING PROCESS Ms.NM Motene @ 015 293 6350/6347 Ms. TO Simango @ 015 293 6352 TECHNICAL ASPECTS Ms.FS Mbau @ 015 293 6192 | R80-00 | 20/01/2017 | 103 | 103 |
| HEDP842/16 | Supply, handling and delivery of human vaccine refrigerators in the Department of Health: Limpopo Province Department of Health | BIDDING PROCESS Ms.NM Motene @ 015 293 6350/6347 Ms. TO Simango @ 015 293 6352 TECHNICAL ASPECTS Mr.TC Mthombeni @ 015 293 6061 | R80-00 | 20/01/2017 | 103 | 103 |

6. AWARDED BIDS

6.1 LIMPOPO TOURISM AGENCY:

| BIDNUMBER | DESCRIPTION OF SERVICE | SERVICE PROVIDER | BID AMOUNT | TOTAL POINTS SCORE D | DATE AWARDED |
|--------------|---|---------------------------|-------------------------------|----------------------|--------------|
| LTA001-16/17 | Provision of Physical Security Services at the LTA' S Offices for a period of (3) three years | Mapheto Business Services | R4 125 895.68 (VAT inclusive) | 100 | 02/12/2016 |
| LTA004-16/17 | Provision of Occupational Hygiene Services for a period of (3) three years | I Bower & Associates | R1 297 151.74 (VAT inclusive) | 100 | 06/11/2016 |

6.2 DEPARTMENT OF AGRICULTURE AND RURAL DEVELOPMENT

| BIDNUMBER | DESCRIPTION OF SERVICE | SERVICE PROVIDER | BID AMOUNT | TOTAL POINTS SCORE D | DATE AWARDED |
|------------|--|-----------------------------------|----------------|----------------------|--------------|
| ACDP 16/05 | The construction of an abulation block facility and storage shed at Rahlagane Table Grapes of Ephraim Mogale Municipality in Sekhukhune District of Limpopo Province | Maleko Projects & Construction CC | R1 808 780.23 | 100 | 28/11/2016 |
| ACDP 16/20 | The construction of Miilking parlour with milk processing equipment at Madzivhandila college in Thulamela Municipality of Vhembe District of Limpopo Province | Wagashu Construction | R 2 818 516.11 | 100 | 12/12/2016 |

5. CANCELLED BIDS

5.1 LIMPOPO TOURISM AGENCY

| TENDER BULLETIN NO. | BID NO | PROJECT DESCRIPTION | DATE ADVERTISED | DATE CLOSED | REASON FOR CANCELLATION |
|----------------------------|---------------|---|------------------------|--------------------|----------------------------------|
| 15 OF 2026/17 FY | LTA003-16/17 | Design, hosting, maintenance of website | 15/07/2016 | 10/08/2016 | Technical Error on Specification |
| 15 OF 2026/17 FY | LTA002-16/17 | Develop ICT strategy | 26/08/2016 | 28/08/2016 | Technical Error on Specification |
| 24 OF 2026/17 FY | LTA007-16/17 | Appointment of Service Provider as an Employer Organization | 16/09/2016 | 10/10/2016 | Non-responsive |

5.2 DEPARTMENT OF AGRICULTURE AND RURAL DEVELOPMENT

| TENDER BULLETIN NO. | BID NO | PROJECT DESCRIPTION | DATE ADVERTISED | DATE CLOSED | REASON FOR CANCELLATION |
|----------------------------|---------------|---|------------------------|--------------------|-----------------------------------|
| 10 OF 2016/17 FY | ACDP 16/07 | Supply, delivery, offloading and packing of fencing materials at Mapela in the Mogalakwena Municipality for Limpopo Department of Agriculture and Rural Development (LDARD) | 10/06/2016 | 12/07/2016 | The service is no longer required |

5.3. DEPARTMENT OF PUBLIC WORKS, ROADS AND INFRASTRUCTURE

| TENDER BULLETIN NO. | BID NO | PROJECT DESCRIPTION | DATE ADVERTISED | CLOSING DATE | REASON FOR CANCELLATION |
|----------------------------|---------------|---|------------------------|-------------------------------|--------------------------------|
| 35 /2015/16 FY | LDPW-PS/15071 | Rendering of Security Services at Capricorn | 11 December 2015 | 22 nd January 2016 | The amendment of specification |

| | | | | | |
|----------------|----------------------|---|------------------|-------------------------------|--|
| | | District in the Capricorn District | | | and procurement strategy. |
| 35 /2015/16 FY | LDPW-PS/15072 | Rendering of Security Services at the Gables Flats in the Capricorn District | 11 December 2015 | 22 nd January 2016 | The amendment of specification and procurement strategy. |
| 35 /2015/16 FY | LDPW-PS/15073 | Rendering of Security Services at Sunnyside Flats in the Capricorn District | 11 December 2015 | 22 nd August 2016 | The amendment of specification and procurement strategy. |
| 35 /2015/16 FY | LDPW-PS/15074 | Rendering of Security Services at Dewini Flats in the Capricorn District | 11 December 2015 | 22 nd January 2016 | The amendment of specification and procurement strategy. |
| 35 /2015/16 FY | LDPW-PS/15075 | Rendering of Security Services at Hillside Flats in the Capricorn District | 11 December 2015 | 22 nd January 2016 | The amendment of specification and procurement strategy. |
| 35 /2015/16 FY | LDPW-PS/15076 | Rendering of Security Services at Tubatse Cost Centre in the Sekhukhune District DWRI | 11 December 2015 | 28 th January 2016 | The amendment of specification and procurement strategy. |
| 35 /2015/16 FY | LDPW-PS/15077 | Rendering of Security Services at Sekhukhune District Offices in the Sekhukhune District DPWRI | 11 December 2015 | 28 th January 2016 | The amendment of specification and procurement strategy. |
| 35 /2015/16 FY | LDPW-PS/15078 | Rendering of Security Services at Nebo Stores in Sekhukhune District DPWRI | 11 December 2015 | 28 th January 2016 | The amendment of specification and procurement strategy. |
| 35 /2015/16 FY | LDPW-PS/15079 | Rendering of Security Services at Limpopo Provincial Legislature in the Sekhukhune District. DPWRI | 11 December 2015 | 28 th January 2016 | The amendment of specification and procurement strategy. |
| 35 /2015/16 FY | LDPW-PS/15080 | Rendering of Security Services at Nebo Cost Centre in the Sekhukhune District DPWRI | 11 December 2015 | 28 th January 2016 | The amendment of specification and procurement strategy. |

6. SPECIAL NOTICES

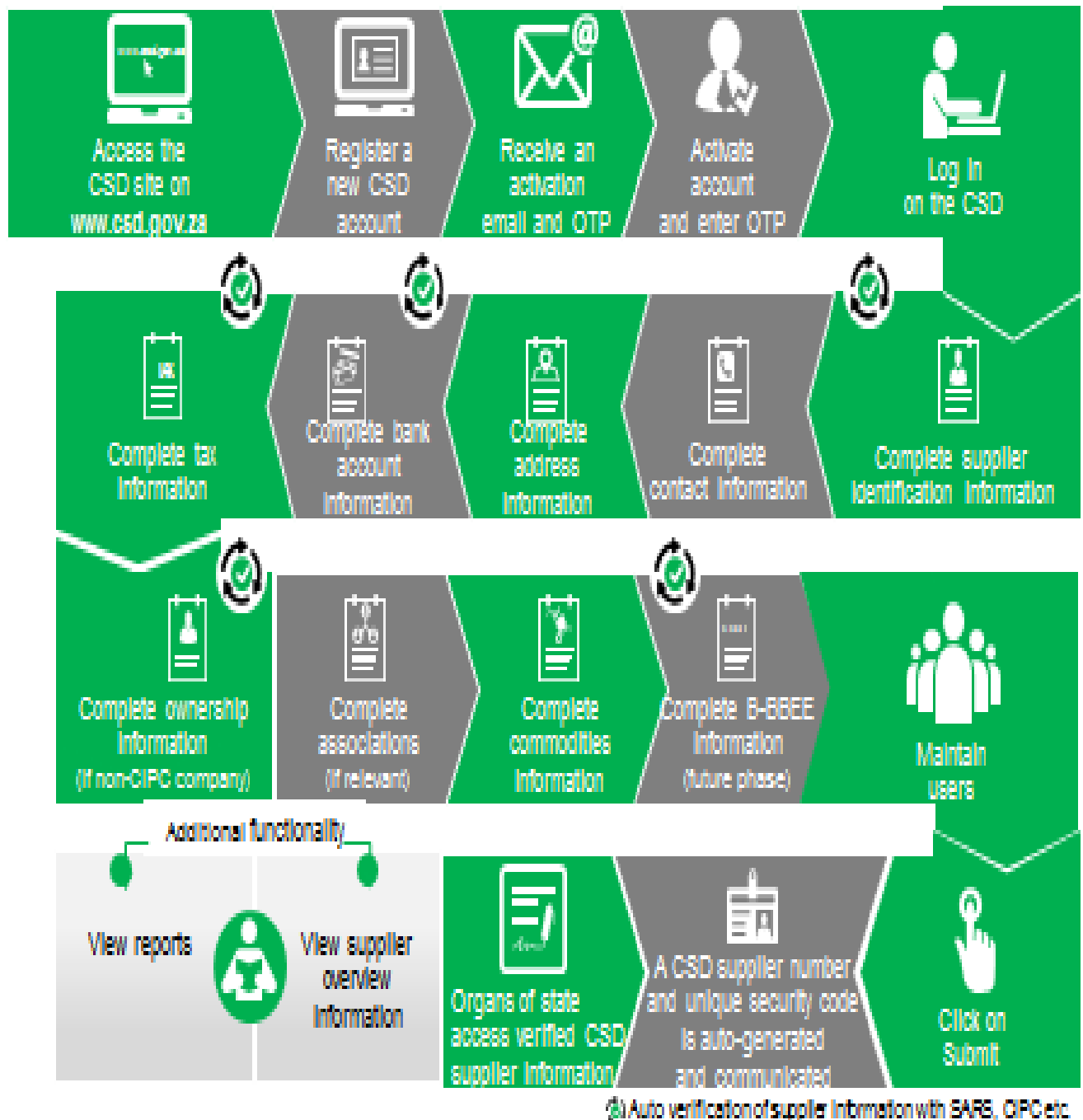
6.1 (SCM Advice Centers): LIMPOPO PROVINCIAL TREASURY

ADVERTISEMENTS OF LIMPOPO CSD CALL CENTRE LINES FOR SUPPLIERS IN THE TENDER BULLETIN:-

LIMPOPO CSD CALL CENTRE LINES FOR SUPPLIERS

| DISTRICT | CALL CENTRE NUMBER | OFFICIAL RESPONSBLE | TIME |
|-----------------|---------------------------|----------------------------|----------------|
| Capricorn | 015 291 8737 | Mr.Holeni TI | 07H30 TO 16H30 |
| Mopani | 015 812 0256 | Ms. Nxumalo P | 07H30 TO 16H30 |
| Sekhukhune | 013 265 0171 | Mrs Morena MM | 07H30 TO 16H30 |
| Vhembe | 015 962 0014 | Mrs. Nefolovhodwe MQ | 07H30 TO 16H30 |
| Waterberg | 014 717 1376 | Mrs. Tsatsi AT | 07H30 TO 16H30 |

Supplier Self-Registration Process



ANNEXURE 1: ADDRESS LIST AND CONTACT DETAILS: LIMPOPO PROVINCIAL DEPARMENTS

| UNIQUE REF. NO. | BID DOCUMENT REFERENCE | CONTACT DETAILS | DOCUMENTS SOLD AT: | DOCUMENTS DEPOSITED AT |
|-----------------|------------------------|---|--|---|
| 100 | DSDP | Tel: 015 293 6000 Fax: 015 293 6211 Website: www.limpopo.gov.za | Department of Social Development , Office No. D3 Ground Floor, Old Capricorn Building, 18 College Street, POLOKWANE and all Provincial Treasury Tender Advice Centres | Deposited in the box located at Department of Health and Social Development, 18 College Street, Polokwane |
| 101 | LPT | Tel: 015 298 7000 Fax: 015 295 7010 Website: www.limpopo.gov.za | Provincial Treasury 46 Hans Van Rensburg Street, POLOKWANE and all Provincial Treasury Tender Advice Centres | Deposited in the bid box located outside a guard house at Ismini Towers, 46 Hans Van Rensburg Street, Polokwane |
| 101A | TC/LP | Tel: 015 291 8400 Fax: 015 295 3310 Website: www.limpopo.gov.za | Provincial Treasury 56 – 58 Paul Kruger Street, POLOKWANE and all Provincial Treasury Tender Advice Centres | Deposited in the bid box located in the main entrance, Finance House Building, 56-58 Paul Kruger Street, Polokwane |
| 102 | PRDP | Tel: 015 287 6000 Fax: 015 295 3840 Website: www.limpopo.gov.za | Office of the Premier , 40 Hans van Rensburg Street, POLOKWANE and all SCM Advice Centres | Deposited in the bid box located at Mowaneng Building, 40 Hans van Rensburg Street, Polokwane |
| 103 | HEDP | Tel: 015 293 6000 Fax: 015 293 6211 Website: www.limpopo.gov.za | Department of Health , Office No. D3 Ground Floor, Old Capricorn Building, 18 College Street, POLOKWANE and all Provincial Treasury Tender Advice Centres | Deposited in the box located at Department of Health and Social Development, 18 College Street, Polokwane |
| 104 | LPEDT | Tel: 015 290 7600/1 Fax: 015 297 4494 Website: www.limpopo.gov.za | Department of Education , Corner 113 Biccand and 24 Excelsior Streets, POLOKWANE and all Provincial Treasury Tender Advice Centres | Deposited in the bid box located in the main entrance of corner 113 Biccand Street and Excelsior Street, Polokwane |
| 105 | PUDP | Tel: 015 295 1000 Fax: 015 295 1163 Website: www.limpopo.gov.za | Department of Roads & Transport , 40 Paul Kruger Street, POLOKWANE and all Provincial Treasury Tender Advice Centres | Deposited in the bid box located at 1 st Floor, Paul Kruger Wing, 40 Paul Kruger Street, Polokwane |
| 106 | DSSL | Tel: 015 290 2900 Fax: 015 291 4452 Website: www.limpopo.gov.za | Department of Safety, Security and Liaison , 32 Schoeman Street, POLOKWANE and all Provincial Treasury Tender Advice Centres | Deposited in the bid box located in the main entrance of 32 Schoeman Street, Polokwane |
| 107 | COGHSTA | Tel: 015 294 2000 Fax: 015 295 4190 Website: www.limpopo.gov.za | Department of Co-Operative Governance, Human Settlements & Traditional Affairs , 28 Market Street, Office No. G 74, Ground Floor, Polokwane. | Deposited in the bid box located at Hensa Towers, Cnr of Rabe and Landdros Mare Streets, Polokwane |
| 108 | DSAC | Tel: 015 284 4000 Fax: 015 284 4514 Website: www.limpopo.gov.za | Department of Sport, Arts and Culture Olympic Towers, Corner Rabe and Biccand Street, POLOKWANE and all Provincial Treasury Tender Advice Centre | Deposited in the bid box located in the main entrance of Olympic Towers, Corner 21 Rabe and Biccand Street, Polokwane |
| 109 | LEDET | Tel: 015 293 8300 Fax: 015 293 8319 Website: www.limpopo.gov.za | Department of Economic Development, Environment & Tourism , 90 Bok Street, POLOKWANE and all SCM Advice Centres | Deposited in the bid box located in the main entrance of Evridiki Towers, 20 Hans Van Rensburg Street, Polokwane |
| 110 | LDPW & WODP | Tel: 015 284 7000 Fax: 015 284 7031 Website: www.limpopo.gov.za | Department of Public Works , Works Towers, 43 Church Street, POLOKWANE and all Provincial Treasury Tender Advice Centres | Deposited in the bid box located at Corner Blaawberg and River Street Ladanna Polokwane 0699 Private Bag X9490 Polokwane 0700 |
| 111 | ACDP | Tel: 015 294 3000/30/60/90/20 Fax: 015 294 4506 Website: www.limpopo.gov.za | Department of Agriculture , Temo Towers, 69 Biccand Street, POLOKWANE and all Provincial Treasury Tender Advice Centres | Deposited in the bid box located in the main entrance of AgriVillage, 69 Biccand Street, Polokwane |

ANNEXURE 2: ADDRESS LIST AND CONTACT DETAILS: LIMPOPO PUBLIC ENTITIES

| UNIQUE REF. NO. | BID DOCUMENT REFERENCE | CONTACT DETAILS | DOCUMENTS SOLD AT: | DOCUMENTS DEPOSITED AT |
|-----------------|------------------------|---|---|---|
| 112 | RFB: LIMP | Tel: 015 293 3621 Fax: 015 293 3660 Website: www.golimpopo.co | State Information Technology Agency (SITA) Limpopo Office, Moolman Building, 27 Market Street, POLOKWANE, 0699 | Bid box located in the Main Entrance of Moolman Building, 27 Market Street, Polokwane |
| 113 | LTA | Tel: 015 293 3600 Fax: 015 293 3655 Website: www.golimpopo.com | Limpopo Tourism Agency , ERF 92/688, Portion 2 Southern Gateway, Ext 4, N1 Main Road, Polokwane 0699 | Bid box located in the offices ERF 92/688, Portion 2 Southern Gateway, Ext 4, N1 Main Road, Polokwane 0699 |
| 114 | LGB | Tel: 015 295 5581 Fax: 015 295 3566 Website: www.lgb.org | Limpopo Gambling Board , 22 Schoeman Street, POLOKWANE, from 08H30 to 16H00 | Bid box located in the main entrance, ground floor, 22 Schoeman Street, Polokwane |
| 115 | TIL | Tel: 015 295 5171 Fax: 015 295 5197 Website: www.til.co.za | Trade and Investment Limpopo 130A Marshall Street, POLOKWANE, 0699 | Bid box located in the main entrance, ground floor, 130 A Marshall Street, Polokwane |
| 116 | LIBSA | Tel: 015 287 3000 Fax: 015 297 6732 Website: www.libsa.co.za | Limpopo Business Support Agency , 06 Platinum Street, Ladine, POLOKWANE, 0700 | Bid box located in the main entrance, 06 Platinum Street, Ladine, Polokwane |
| 117 | RAL | Tel: 015 284 4600 Fax: 015 284 4701 Website: www.ral.co.za | Road Agency Limpopo (RAL) , RAL Towers, 26 Rabe Street, POLOKWANE, 0700 | Bid box located in the entrance foyer (ground floor) of RAL Towers, at 26 Rabe Street, Polokwane |
| 118 | LADC | Tel: 015 296 3543 Fax: 015 296 3549 Website: www.limpopo.gov.za | Limpopo Agribusiness Development Corporation , 29 Rhodes Drist Street, Bendor, POLOKWANE, 0699 | Bid box located in the main entrance, 29 Rhodes Drist Street, Bendor, Polokwane, |
| 119 | GAAL | Tel: 015 288 0122 Fax: 015 288 0346 Website: www.gaal.co.za | Gateway Airports Authority Limited , N1 Road to Louis Trichardt, Army Base, POLOKWANE International Airport, Polokwane, 0700 | Bid box located in the main entrance, ground floor of administration building, Polokwane International Airport, Army Base |
| 120 | VIVET | Tel: 015 963 3156 Fax: 015 963 3154 Website: fetcol@mweb.co.za | Vhembe FET College , Stand No. 203, Unit A, Sibasa, 0970, Limpopo Province | Vhembe Fet College, Central Office, Private Bag X2136, SIBASA 0970 |
| 120 | VIVET | Tel: 015 963 3156 Fax: 015 963 3154 Website: www.fetcol@mweb.co.za | Vhembe FET College, Stand No. 203, Unit A, Sibasa, 0970, Limpopo Province | Vhembe Fet College, Central Office, Private Bag X2136, SIBASA 0970 |

ANNEXURE 3: ADDRESS LIST AND CONTACT DETAILS: PROVINCIAL TREASURY TENDER ADVICE CENTRES

(Tender bulletins and bid documents are obtainable from the following Centers):

| PROVINCIAL TREASURY SUPPLY CHAIN MANAGEMENT ADVICE CENTRES | |
|---|---|
| <p>HEAD OFFICE</p> <p>Provincial Supply Chain Management Office 56 – 58 Paul Kruger Street POLOKWANE Private Bag x9494 POLOKWANE, 0700 Tel No. (015) 291 8400</p> <p>Contact: Ms. M.BRakubu @ Tel: 015 291 8717/6</p> | <p>Capricorn SCM Advice Centre</p> <p>Limpopo Provincial Treasury 56-58 Paul Kruger Street Private Bag x9494 POLOKWANE, 0700 Tel No. (015) 291 8400</p> <p>Contact Person: Ms. M.M. Masindi</p> |
| <p>Vhembe SCM Advice Centre</p> <p>Limpopo Provincial Treasury Government Building Complex BLOCK E GROUND FLOOR THOHOYANDOU, VENDA Tel: (015) 962 1752 Fax: (015) 962 1282</p> <p>Contact Person: Ms. A Manena</p> | <p>Mopani SCM Advice Centre</p> <p>Limpopo Provincial Treasury Private Bag X 1973 GIYANI, 0826 Tel: (015) 812 0149 Fax: 086 219 7905</p> <p>Contact Person: Mr. M. B. Mbedzi</p> |
| <p>Waterberg SCM Advice Centre</p> <p>Limpopo Provincial Treasury 98 Nelson Mandela Street Decimale Building MODIMOLLE Tel: (014) 717 5837 Fax: (014) 717 5670</p> <p>Contact Person: Mr. P.E. Mogoroga</p> | <p>Sekhukhune SCM Advice Centre</p> <p>Limpopo Provincial Treasury Lefa Centre, Schoonoord Road JANE FURSE Tel: (013) 265 1344 Fax: (013) 265 1354</p> <p>Contact Person: Mr. M. S. Sehale</p> |

ANNEXURE 4: ADDRESS LIST AND CONTACT DETAILS: SATELLITE OFFICES

(Tender bulletins are obtainable from the following centers)

| CAPRICORN | VHEMBE | MOPANI | WATERBERG | SEKHUKHUNE |
|-----------|--------|--------|---|------------|
| | | | Libsa Thabazimbi: No.08 Riet Bok Street Tel. No. (014) 772 2437 | |
| | | | Libsa Lephalale No. 3A Venter Street Tel. No. (014) 763 2834 | |