

TENDER BULLETIN

NO. 36 2016/17 FY

09 DECEMBER 2016



LIMPOPO

PROVINCIAL GOVERNMENT
REPUBLIC OF SOUTH AFRICA

Provincial Supply Chain Management Office

TABLE OF CONTENTS

	Page No.
1. REPORTING FRAUDULENT AND CORRUPT ACTIVITIES.....	03
2. INSTRUCTIONS.....	04
3. BID INVITATIONS FOR SUPPLIES, SERVICES AND DISPOSALS	05 – 06
4. AWARDED BIDS.....	07–08
5. CANCELLED BID	09–13
6. SPECIAL NOTICES.....	14– 15
ANNEXURE 1: ADDRESS LIST AND CONTACT DETAILS: PROVINCIAL DEPARTMENTS.....	16
ANNEXURE 2: ADDRESS LIST AND CONTACT DETAILS: PUBLIC ENTITIES.....	17
ANNEXURE 3: ADDRESS LIST AND CONTACT DETAILS: PROVINCIAL TREASURY TENDER ADVISE CENTRES	18
ANNEXURE 4: ADDRESS LIST AND CONTACT DETAILS: SATELLITE OFFICES	19

REPORT

FRAUDULENT & CORRUPT ACTIVITIES ON GOVERNMENT PROCUREMENT SYSTEM

National Anti-Corruption @ 0800 701 701

Security and Investigating Services – Limpopo Provincial Treasury @ 015 298 7196

ALL COMPLAINTS/CONCERNS RELATED TO SCM NON-COMPLIANCE MUST BE REPORTED TO:

LIMPOPO PROVINCIAL TREASURY

PRIVATE BAG X 9486

POLOKWANE

0700

PROVINCIAL TREASURY, FINANCE HOUSE, 56 – 58 PAUL KRUGER STREET, POLOKWANE

2. INSTRUCTIONS

1. Bidders are advised to read the entire tender bulletin.
2. Tenders for procurement of supplies, services and disposals are categorized as follows:

SUPPLIES

- Accommodation, leasing of
- Audio visual equipment
- Building material
- Chemicals: Agricultural/Forestry/
- Laboratory/Water Care
- Clothing/Textiles
- Computer equipment
- Computer software
- Electrical equipment
- Electronic equipment
- Furniture
- General
- Medical
- Office equipment: Labour-saving devices
- Perishable provisions
- Stationary/printing
- Steel
- Timber
- Vehicle (all types)
- Workshop equipment

SERVICES

- Building
- Civil
- Electrical
- Functional (including cleaning-, and security services)
- General
- Maintenance of electrical, mechanical equipment and plumbing
- Mechanical
- Professional
- Repair and maintenance of vehicles
- Transport

DISPOSALS

- Clothing and textiles
- Furniture
- General
- Scrap metal
- Vehicles

3. Bid documents are generally available in English only.
4. The address where a bid document is available from and where it must be submitted to may differ.
5. The addresses at which bid documents may be obtained and to which tenders must be posted, appear in Annexure 1.
6. The address list of various Supply Chain Management Advice Centres at which bid documents and tender bulletins may also be obtained, appear in Annexure 3; and
7. The address list of Supply Chain Management satellite offices at which tender bulletins may also be obtained, appear in Annexure 4.

3. BID INVITATIONS FOR SUPPLIES, SERVICES AND DISPOSALS

BID NO.	DESCRIPTION OF SERVICE OR SUPPLIES	CONTACT DETAILS	BID DOCUMENT PRICE (NON-REFUNDABLE)	DUE AT 11H00	BID DOCUMENTS OBTAINABLE FROM	POST OR DELIVER BIDS TO
					See Annexure 1 & 2, Page 16 & 17	
RAL/2016SMME AUDIT/RFB006	Appointment of service provider to render Auditing of SMME and Labour Data on RAL Projects	BIDDING PROCESS Mr. Matsobane Dinala @ Tel No: 015 284 4628 Cell No: 082 465 0812 Email Address dinalaMR@ral.co.za TECHNICAL ASPECTS Mr. N Muthivheli @ Tel No: 015 284 4604 Cell No: 082 868 8658 Email Address: muthivhelinn@ral.co.za	R80-00	20/01/2017	117	117
	Road Agency Limpopo					
PRDP 11/2016	Provision of Hygiene Service for Office of the Premier Buildings Compulsory Briefing Session Date: 15 December 2016 Venue: Old Cabinet Boardroom (40 Hans van Rensburg Street, Polokwane, Limpopo Province Time: 11H00	BIDDING PROCESS S Maepa @ 015 287 6109 TECHNICAL ASPECTS tenders@premier.limpopo.gov.za	R80-00	16/01/2017	102	102

	Office of the Premier					
--	------------------------------	--	--	--	--	--

6. AWARDED BIDS

6.1. DEPARTMENT OF LIMPOPO PROVINCIAL TREASURY

BIDNUMBER	DESCRIPTION OF SERVICE	SERVICE PROVIDER	BID AMOUNT	TOTAL POINTS SCORED	DATE AWARDED
LPT 001/2016	Procurement of Transversal Risk Management IT System for Limpopo Provincial Treasury	IDI Technology Solutions (BARNOWL)	R1 896 128.00	90	25/11/2016
LPT 004/2015	Appointment of service provider to develop a Business Continuity Plan: Limpopo Provincial Treasury	Disaster Risk Management (Pty) Ltd, trading as (Disaster Management Solution)	R888 516.00	90	25/11/2016

6.2. DEPARTMENT OF AGRICULTURE AND RURAL DEVELOPMENT

BIDNUMBER	DESCRIPTION OF SERVICE	SERVICE PROVIDER	BID AMOUNT	TOTAL POINTS SCORED	DATE AWARDED
ACDP 16/08	The construction of four bedroom house with services for workers at Mara Research Station in the Makhado Municipality of the Vhembe district	MACOZ Contractor	R1 205 993.12	98.00	25/10/2016
ACDP: 16/02	Supply, delivery and offloading of seeds and seedlings for Limpopo Department of Agriculture and Rural Development	1. Ikemele EGG Production 2. Mupo Washu Enviro Consulting 3. Lotanex 4. Mkhwelekhwelethe Agriculture Co-Operative	Various prices	Various points scoring	07/10/2016

	for the period of two years	5. Social Inclusivity & Community Development Consultancy 6. Siza Kancane Trading Enterprise 113 7. Introspect Trading and projects 8. Manekwana Business Enterprise 9. Metric Industrial Supplies (Vhembe and Sekhukhune District) 10. Andesa General supplies			
ACDP: 16/12	Construction of 10 ha Centre Pivot Irrigation systems at Masoga Teffu Farm in Blouberg Municipal of Capricorn	RTM Consulting Engineer JV YBS Darnol	R2 828 037.15	99.00	08/11/2016
ACDP 16/10	Supply, delivery, installation and maintenance of telephone least cost saving solution and telephone management systems for Limpopo Department of Agriculture and Rural Development for period of three years.	Brilliant Telecommunications (Pty) Ltd	R404 037.05	93.53	08/11/2016

5. CANCELLED BID

TENDER BULLETIN NO.	BID NO	PROJECT DESCRIPTION	DATE ADVERTISED	DATE CLOSED	REASON FOR CANCELLATION
35 /2015/16 FY	LDPW-PS/15060	Rendering of Security Services at Peter Nchabeleng Flats in the Capricorn District	11 December 2015	18 th January 2016	The amendment of specification and procurement strategy.
35 /2015/16 FY	LDPW-PS/15061	Rendering of security services at premier and MEC residence in the Capricorn district	11 December 2015	18 th January 2016	The amendment of specification and procurement strategy.
35 /2015/16 FY	LDPW-PS/15062	Rendering of Security Services at Vaalwater camp in Capricorn District	11 December 2015	18 th January 2016	The amendment of specification and procurement strategy.
35 /2015/16 FY	LDPW-PS/15063	Rendering of Security Services at Peter Premier's Guest House in the Capricorn District	11 December 2015	18 th January 2016	The amendment of specification and procurement strategy.
35 /2015/16 FY	LDPW-PS/15065	Rendering of Security Services at Parliamentary Village in the Capricorn District	11 December 2015	18 th January 2016	The amendment of specification and procurement strategy.
35 /2015/16 FY	LDPW-PS/15066	Rendering of Security Services at Public Works Head Office (Woks Towers) in the Capricorn District	11 December 2015	18 th January 2016	The amendment of specification and procurement strategy.
35 /2015/16 FY	LDPW-PS/15067	Rendering of Security Services at Ladanna Flats in the Capricorn District	11 December 2015	20 th January 2016	The amendment of specification and procurement strategy.
35 /2015/16 FY	LDPW-PS/15068	Rendering of Security Services at Matoks Cost Centre in the Capricorn District	11 December 2015	20 th January 2016	The amendment of specification and procurement strategy.
35 /2015/16 FY	LDPW-PS/15069	Rendering of Security Services at Bochum Cost Centre in the Capricorn District	11 December 2015	20 th January 2016	The amendment of specification and procurement strategy.

35 /2015/16 FY	LDPW-PS/15070	Rendering of Security Services at Mankweng Cost Centre in the Capricorn District	11 December 2015	20 th January 2016	The amendment of specification and procurement strategy.
35 /2015/16 FY	LDPW-PS/15071	Rendering of Security Services at Capricorn District in the Capricorn District	11 December 2015	22 nd January to 15 th February 2016	The amendment of specification and procurement strategy.
35 /2015/16 FY	LDPW-PS/15072	Rendering of Security Services at the Gables Flats in the Capricorn District	11 December 2015	22 nd January to 15 th February 2016	The amendment of specification and procurement strategy.
35 /2015/16 FY	LDPW-PS/15073	Rendering of Security Services at Sunnyside Flats in the Capricorn District	11 December 2015	22 nd January to 15 th February 2016	The amendment of specification and procurement strategy.
35 /2015/16 FY	LDPW-PS/15074	Rendering of Security Services at Dewini Flats in the Capricorn District	11 December 2015	22 nd January to 15 th February 2016	The amendment of specification and procurement strategy.
35 /2015/16 FY	LDPW-PS/15075	Rendering of Security Services at Hillside Flats in the Capricorn District	11 December 2015	22 nd January to 15 th February 2016	The amendment of specification and procurement strategy.
35 /2015/16 FY	LDPW-PS/15076	Rendering of Security Services at Tubatse Cost Centre in the Sekhukhune District DWRI	11 December 2015	28 th January to 15 th February 2016	The amendment of specification and procurement strategy.
35 /2015/16 FY	LDPW-PS/15077	Rendering of Security Services at Sekhukhune District Offices in the Sekhukhune District DPWRI	11 December 2015	28 th January to 15 th February 2016	The amendment of specification and procurement strategy.
35 /2015/16 FY	LDPW-PS/15078	Rendering of Security Services at Nebo Stores in Sekhukhune District DPWRI	11 December 2015	28 th January to 15 th February 2016	The amendment of specification and procurement strategy.
35 /2015/16 FY	LDPW-PS/15079	Rendering of Security Services at Limpopo Provincial Legislature in the Sekhukhune District. DPWRI	11 December 2015	28 th January to 15 th February 2016	The amendment of specification and procurement strategy.
35 /2015/16 FY	LDPW-PS/15080	Rendering of Security Services at Nebo Cost Centre in the Sekhukhune District	11 December 2015	28 th January to 15 th February 2016	The amendment of specification and procurement strategy.

		DPWRI			
35 /2015/16 FY	LDPW-PS/15081	Rendering of Security Services at Ephraim Mogale Cost Centre in the Sekhukhune District DPWRI	11 December 2015	01 st February 2016	The amendment of specification and procurement strategy.
35 /2015/16 FY	LDPW-PS/15082	Rendering of Security Services at Groblersdal Cost Centre in the Sekhukhune District DPWRI	11 December 2015	01 st February 2016	The amendment of specification and procurement strategy.
35 /2015/16 FY	LDPW-PS/15083	Rendering of Security Services at Old H.C Boshoff Hospital (Month to Month basis) center Sekhukhune District DPWRI	11 December 2015	01 st February 2016	The amendment of specification and procurement strategy.
35 /2015/16 FY	LDPW-PS/15084	Rendering of Security Services at Old MEC Residence: Lebowakgomo (Month to month basis) Cost centre in the Sekhukhune District DPWRI	11 December 2015	01 st February 2016	The amendment of specification and procurement strategy.
35 /2015/16 FY	LDPW-PS/15085	Rendering of Security Services at Lebowakgomo Computer Centre (Months to months basis) in the Sekhukhune District DPWRI	11 December 2015	01 st February 2016	The amendment of specification and procurement strategy.
35 /2015/16 FY	LDPW-PS/15086	Rendering Security Services at Giyani Main Store in the Mopani District	11 December 2015	03 rd February 2016	The amendment of specification and procurement strategy.
35 /2015/16 FY	LDPW-PS/15087	Rendering Security Services at Lulekani Cost Centre in the Mopani District	11 December 2015	03 rd February 2016	The amendment of specification and procurement strategy.
35 /2015/16 FY	LDPW-PS/15088	Rendering Security Services at Giyani Cost Centre in the Mopani District	11 December 2015	03 rd February 2016	The amendment of specification and procurement strategy.
35 /2015/16 FY	LDPW-PS/15089	Rendering Security Services at Tzaneen Cost Centre in the Mopani District	11 December 2015	03 rd February 2016	The amendment of specification and procurement strategy.

35 /2015/16 FY	LDPW-PS/15090	Rendering Security Services at Naphuno Cost Centre in the Mopani District	11 December 2015	03 rd February 2016	The amendment of specification and procurement strategy.
35 /2015/16 FY	LDPW-PS/15091	Rendering Security Services at Giyani Government complex in the Mopani District	11 December 2015	05 th February 2016	The amendment of specification and procurement strategy.
35 /2015/16 FY	LDPW-PS/15092	Rendering Security Services at Sekgosese Cost Centre in the Mopani District	11 December 2015	05 th February 2016	The amendment of specification and procurement strategy.
35 /2015/16 FY	LDPW-PS/15093	Rendering Security Services at Giyani Carpentry Workshop in the Mopani District	11 December 2015	05 th February 2016	The amendment of specification and procurement strategy.
35 /2015/16 FY	LDPW-PS/15094	Rendering Security Services at Bakenberg Cost Centre in the Waterberg District	11 December 2015	05 th February 2016	The amendment of specification and procurement strategy.
35 /2015/16 FY	LDPW-PS/15094	Rendering Security Services at Bakenberg Cost Centre in the Waterberg District	11 December 2015	05 th February 2016	The amendment of specification and procurement strategy.
35 /2015/16 FY	LDPW-PS/15095	Rendering Security Services at Mokopane Cost Centre in the Waterberg District	11 December 2015	09 th February 2016	The amendment of specification and procurement strategy.
35 /2015/16 FY	LDPW-PS/15096	Rendering Security Services at Waterberg District Offices in the Waterberg District	11 December 2015	09 th February 2016	The amendment of specification and procurement strategy.
35 /2015/16 FY	LDPW-PS/15097	Rendering Security Services at Modimolle Cost Centre in the Waterberg District	11 December 2015	09 th February 2016	The amendment of specification and procurement strategy.
35 /2015/16 FY	LDPW-PS/15098	Rendering Security Services at Thabazimbi Cost Centre in the Waterberg District	11 December 2015	09 th February 2016	The amendment of specification and procurement strategy.
35 /2015/16 FY	LDPW-PS/15099	Rendering Security Services at Lephalale Cost Centre in the Waterberg District	11 December 2015	09 th February 2016	The amendment of specification and procurement strategy.
35 /2015/16 FY	LDPW-PS/15100	Rendering Security Services at Mokopane Unit D in the Waterberg District	11 December 2015	11 th February 2016	The amendment of specification and procurement strategy.
35 /2015/16 FY	LDPW-PS/15101	Rendering Security Services at Bela-Bela Clinic Month to month		11 th February 2016	

		basis) in the Waterberg District			
35 /2015/16 FY	LDPW-PS/15102	Rendering Security Services at Limburg farm clinic (Month to month basis) in the Waterberg District	11 December 2015	11 th February 2016	The amendment of specification and procurement strategy.
35 /2015/16 FY	LDPW-PS/15103	Rendering of Security Services at Thohoyandou Central Stores in the Vhembe District	11 December 2015	11 th February 2016	The amendment of specification and procurement strategy.
35 /2015/16 FY	LDPW-PS/15104	Rendering of Security Services at Makhado Cost Centre and Bergvleit Road Camp in the Vhembe District	11 December 2015	11 th February 2016	The amendment of specification and procurement strategy.
35 /2015/16 FY	LDPW-PS/15105	Rendering of Security Services at Thohoyandou Government Complex in the Vhembe District	11 December 2015	15 th February 2016	The amendment of specification and procurement strategy.
35 /2015/16 FY	LDPW-PS/15106	Rendering of Security Services at Makwarela Government Complex in the Vhembe District	11 December 2015	15 th February 2016	The amendment of specification and procurement strategy.
35 /2015/16 FY	LDPW-PS/15107	Rendering of Security Services at Vhembe District Offices in the Vhembe District	11 December 2015	15 th February 2016	The amendment of specification and procurement strategy.
35 /2015/16 FY	LDPW-PS/15108	Rendering of Security Services at Thohoyandou Building Maintenance in the Vhembe District	11 December 2015	15 th February 2016	The amendment of specification and procurement strategy.
35 /2015/16 FY	LDPW-PS/15109	Rendering of Security Services at Thohoyandou Central Stores in the Vhembe District	11 December 2015	15 th February 2016	The amendment of specification and procurement strategy.
35 /2015/16 FY	LDPW-PS/15081	Rendering of Security Services at Thohoyandou Central Stores in the Vhembe District	11 December 2015	01 th February 2016	The amendment of specification and procurement strategy.

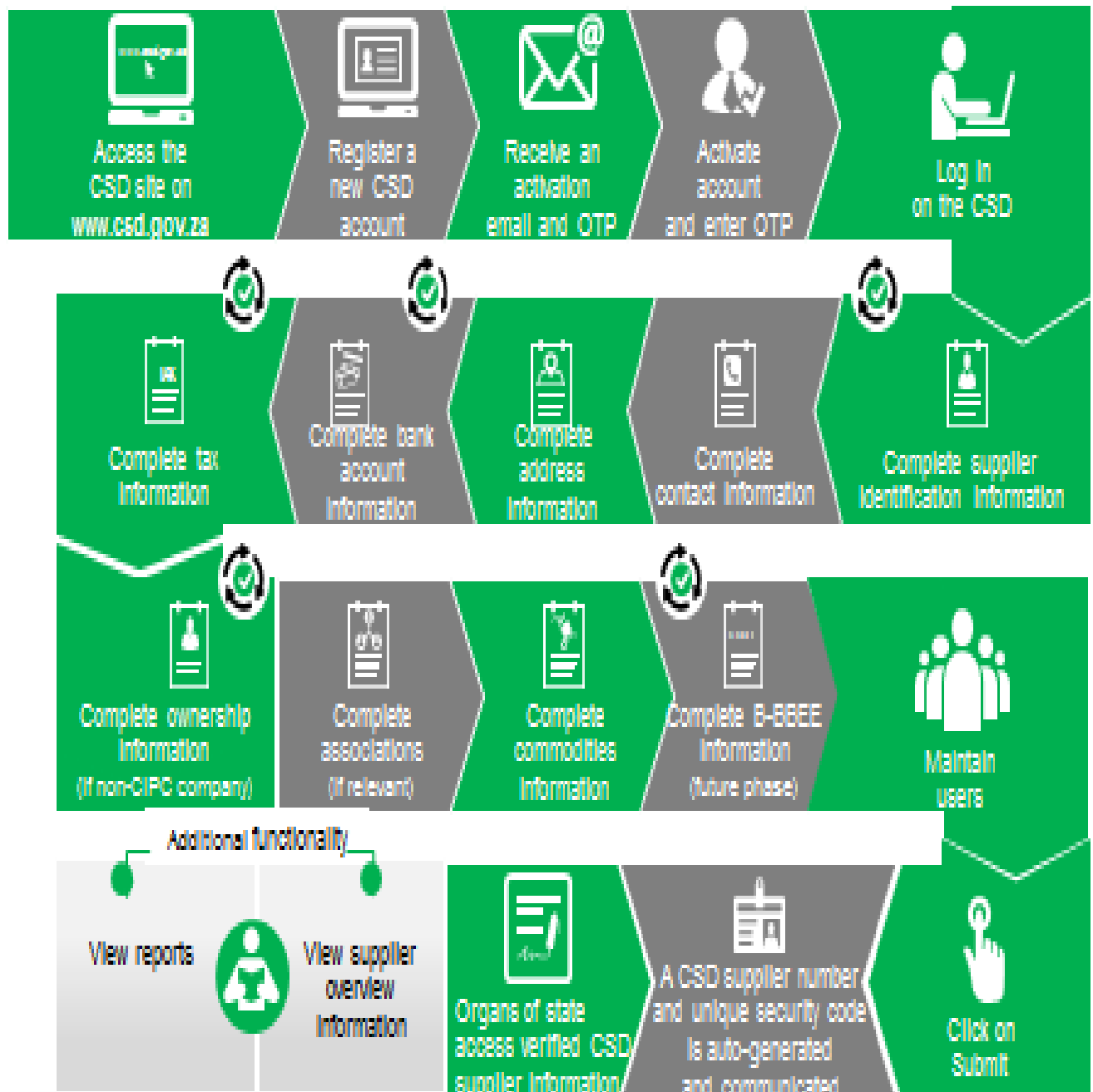
6. SPECIAL NOTICES

**(SCM Advice Centers): LIMPOPO PROVINCIAL TREASURY
ADVERTISEMENTS OF LIMPOPO CSD CALL CENTRE LINES FOR SUPPLIERS IN THE TENDER BULLETIN:-**

LIMPOPO CSD CALL CENTRE LINES FOR SUPPLIERS

DISTRICT	CALL CENTRE NUMBER	OFFICIAL RESPONSIBLE	TIME
Capricorn	015 291 8737	Mr.Holeni TI	07H30 TO 16H30
Mopani	015 812 0256	Ms. Nxumalo P	07H30 TO 16H30
Sekhukhune	013 265 0171	Mrs Morena MM	07H30 TO 16H30
Vhembe	015 962 0014	Mrs. Nefolovhodwe MQ	07H30 TO 16H30
Waterberg	014 717 1376	Mrs. Tsatsi AT	07H30 TO 16H30

Supplier Self-Registration Process



(a) Auto verification of supplier information with SARS, CIPC etc.

ANNEXURE 1: ADDRESS LIST AND CONTACT DETAILS: LIMPOPO PROVINCIAL DEPARMENTS

UNIQUE REF. NO.	BID DOCUMENT REFERENCE	CONTACT DETAILS	DOCUMENTS SOLD AT:	DOCUMENTS DEPOSITED AT
100	DSDP	Tel: 015 293 6000 Fax: 015 293 6211 Website: www.limpopo.gov.za	Department of Social Development , Office No. D3 Ground Floor, Old Capricorn Building, 18 College Street, POLOKWANE and all Provincial Treasury Tender Advice Centres	Deposited in the box located at Department of Health and Social Development, 18 College Street, Polokwane
101	LPT	Tel: 015 298 7000 Fax: 015 295 7010 Website: www.limpopo.gov.za	Provincial Treasury 46 Hans Van Rensburg Street, POLOKWANE and all Provincial Treasury Tender Advice Centres	Deposited in the bid box located outside a guard house at Ismini Towers, 46 Hans Van Rensburg Street, Polokwane
101A	TC/LP	Tel: 015 291 8400 Fax: 015 295 3310 Website: www.limpopo.gov.za	Provincial Treasury 56 – 58 Paul Kruger Street, POLOKWANE and all Provincial Treasury Tender Advice Centres	Deposited in the bid box located in the main entrance, Finance House Building, 56-58 Paul Kruger Street, Polokwane
102	PRDP	Tel: 015 287 6000 Fax: 015 295 3840 Website: www.limpopo.gov.za	Office of the Premier , 40 Hans van Rensburg Street, POLOKWANE and all SCM Advice Centres	Deposited in the bid box located at Mowaneng Building, 40 Hans van Rensburg Street, Polokwane
103	HEDP	Tel: 015 293 6000 Fax: 015 293 6211 Website: www.limpopo.gov.za	Department of Health , Office No. D3 Ground Floor, Old Capricorn Building, 18 College Street, POLOKWANE and all Provincial Treasury Tender Advice Centres	Deposited in the box located at Department of Health and Social Development, 18 College Street, Polokwane
104	LPEDT	Tel: 015 290 7600/1 Fax: 015 297 4494 Website: www.limpopo.gov.za	Department of Education , Corner 113 Biccadd and 24 Excelsior Streets, POLOKWANE and all Provincial Treasury Tender Advice Centres	Deposited in the bid box located in the main entrance of corner 113 Biccadd Street and Excelsior Street, Polokwane
105	PUDP	Tel: 015 295 1000 Fax: 015 295 1163 Website: www.limpopo.gov.za	Department of Roads & Transport , 40 Paul Kruger Street, POLOKWANE and all Provincial Treasury Tender Advice Centres	Deposited in the bid box located at 1 st Floor, Paul Kruger Wing, 40 Paul Kruger Street, Polokwane
106	DSSL	Tel: 015 290 2900 Fax: 015 291 4452 Website: www.limpopo.gov.za	Department of Safety, Security and Liaison , 32 Schoeman Street, POLOKWANE and all Provincial Treasury Tender Advice Centres	Deposited in the bid box located in the main entrance of 32 Schoeman Street, Polokwane
107	COGHSTA	Tel: 015 294 2000 Fax: 015 295 4190 Website: www.limpopo.gov.za	Department of Co-Operative Governance, Human Settlements & Traditional Affairs , 28 Market Street, Office No. G 74, Ground Floor, Polokwane.	Deposited in the bid box located at Hensa Towers, Cnr of Rabe and Landdros Mare Streets, Polokwane
108	DSAC	Tel: 015 284 4000 Fax: 015 284 4514 Website: www.limpopo.gov.za	Department of Sport, Arts and Culture Olympic Towers, Corner Rabe and Biccadd Street, POLOKWANE and all Provincial Treasury Tender Advice Centre	Deposited in the bid box located in the main entrance of Olympic Towers, Corner 21 Rabe and Biccadd Street, Polokwane
109	LEDET	Tel: 015 293 8300 Fax: 015 293 8319 Website: www.limpopo.gov.za	Department of Economic Development, Environment & Tourism , 90 Bok Street, POLOKWANE and all SCM Advice Centres	Deposited in the bid box located in the main entrance of Evridiki Towers, 20 Hans Van Rensburg Street, Polokwane
110	LDPW & WODP	Tel: 015 284 7000 Fax: 015 284 7031 Website: www.limpopo.gov.za	Department of Public Works , Works Towers, 43 Church Street, POLOKWANE and all Provincial Treasury Tender Advice Centres	Deposited in the bid box located at Corner Blaawberg and River Street Ladanna Polokwane 0699 Private Bag X9490 Polokwane 0700
111	ACDP	Tel: 015 294 3000/30/60/90/20 Fax: 015 294 4506 Website: www.limpopo.gov.za	Department of Agriculture , Temo Towers, 69 Biccadd Street, POLOKWANE and all Provincial Treasury Tender Advice Centres	Deposited in the bid box located in the main entrance of AgriVillage, 69 Biccadd Street, Polokwane

ANNEXURE 2: ADDRESS LIST AND CONTACT DETAILS: LIMPOPO PUBLIC ENTITIES

UNIQUE REF. NO.	BID DOCUMENT REFERENCE	CONTACT DETAILS	DOCUMENTS SOLD AT:	DOCUMENTS DEPOSITED AT
112	RFB: LIMP	Tel: 015 293 3621 Fax: 015 293 3660 Website: www.golimpopo.co	State Information Technology Agency (SITA) Limpopo Office, Moolman Building, 27 Market Street, POLOKWANE, 0699	Bid box located in the Main Entrance of Moolman Building, 27 Market Street, Polokwane
113	LTA	Tel: 015 293 3600 Fax: 015 293 3655 Website: www.golimpopo.com	Limpopo Tourism Agency , ERF 92/688, Portion 2 Southern Gateway, Ext 4, N1 Main Road, Polokwane 0699	Bid box located in the offices ERF 92/688, Portion 2 Southern Gateway, Ext 4, N1 Main Road, Polokwane 0699
114	LGB	Tel: 015 295 5581 Fax: 015 295 3566 Website: www.lgb.org	Limpopo Gambling Board , 22 Schoeman Street, POLOKWANE, from 08H30 to 16H00	Bid box located in the main entrance, ground floor, 22 Schoeman Street, Polokwane
115	TIL	Tel: 015 295 5171 Fax: 015 295 5197 Website: www.til.co.za	Trade and Investment Limpopo 130A Marshall Street, POLOKWANE, 0699	Bid box located in the main entrance, ground floor, 130 A Marshall Street, Polokwane
116	LIBSA	Tel: 015 287 3000 Fax: 015 297 6732 Website: www.libsa.co.za	Limpopo Business Support Agency , 06 Platinum Street, Ladine, POLOKWANE, 0700	Bid box located in the main entrance, 06 Platinum Street, Ladine, Polokwane
117	RAL	Tel: 015 284 4600 Fax: 015 284 4701 Website: www.ral.co.za	Road Agency Limpopo (RAL) , RAL Towers, 26 Rabe Street, POLOKWANE, 0700	Bid box located in the entrance foyer (ground floor) of RAL Towers, at 26 Rabe Street, Polokwane
118	LADC	Tel: 015 296 3543 Fax: 015 296 3549 Website: www.limpopo.gov.za	Limpopo Agribusiness Development Corporation , 29 Rhodes Drist Street, Bendor, POLOKWANE, 0699	Bid box located in the main entrance, 29 Rhodes Drist Street, Bendor, Polokwane,
119	GAAL	Tel: 015 288 0122 Fax: 015 288 0346 Website: www.gaal.co.za	Gateway Airports Authority Limited , N1 Road to Louis Trichardt, Army Base, POLOKWANE International Airport, Polokwane, 0700	Bid box located in the main entrance, ground floor of administration building, Polokwane International Airport, Army Base
120	VIVET	Tel: 015 963 3156 Fax: 015 963 3154 Website: www.fetcol@mweb.co.za	Vhembe FET College , Stand No. 203, Unit A, Sibasa, 0970, Limpopo Province	Vhembe Fet College, Central Office, Private Bag X2136, SIBASA 0970
120	VIVET	Tel: 015 963 3156 Fax: 015 963 3154 Website: www.fetcol@mweb.co.za	Vhembe FET College, Stand No. 203, Unit A, Sibasa, 0970, Limpopo Province	Vhembe Fet College, Central Office, Private Bag X2136, SIBASA 0970

ANNEXURE 3: ADDRESS LIST AND CONTACT DETAILS: PROVINCIAL TREASURY TENDER ADVICE CENTRES

(Tender bulletins and bid documents are obtainable from the following Centers):

PROVINCIAL TREASURY SUPPLY CHAIN MANAGEMENT ADVICE CENTRES	
<p>HEAD OFFICE</p> <p>Provincial Supply Chain Management Office 56 – 58 Paul Kruger Street POLOKWANE Private Bag x9494 POLOKWANE, 0700 Tel No. (015) 291 8400</p> <p>Contact: Ms. M.BRakubu @ Tel: 015 291 8717/6</p>	<p>Capricorn SCM Advice Centre</p> <p>Limpopo Provincial Treasury 56-58 Paul Kruger Street Private Bag x9494 POLOKWANE, 0700 Tel No. (015) 291 8400</p> <p>Contact Person: Ms. M.M. Masindi</p>
<p>Vhembe SCM Advice Centre</p> <p>Limpopo Provincial Treasury Government Building Complex BLOCK E GROUND FLOOR THOHOYANDOU, VENDA Tel: (015) 962 1752 Fax: (015) 962 1282</p> <p>Contact Person: Ms. A Manena</p>	<p>Mopani SCM Advice Centre</p> <p>Limpopo Provincial Treasury Private Bag X 1973 GIYANI, 0826 Tel: (015) 812 0149 Fax: 086 219 7905</p> <p>Contact Person: Mr. M. B. Mbedzi</p>
<p>Waterberg SCM Advice Centre</p> <p>Limpopo Provincial Treasury 98 Nelson Mandela Street Decimale Building MODIMOLLE Tel: (014) 717 5837 Fax: (014) 717 5670</p> <p>Contact Person: Mr. P.E. Mogoroga</p>	<p>Sekhukhune SCM Advice Centre</p> <p>Limpopo Provincial Treasury Lefa Centre, Schoonoord Road JANE FURSE Tel: (013) 265 1344 Fax: (013) 265 1354</p> <p>Contact Person: Mr. M. S. Sehale</p>

ANNEXURE 4: ADDRESS LIST AND CONTACT DETAILS: SATELLITE OFFICES

(Tender bulletins are obtainable from the following centers)

CAPRICORN	VHEMBE	MOPANI	WATERBERG	SEKHUKHUNE
			Libsa Thabazimbi: No.08 Riet Bok Street Tel. No. (014) 772 2437	
			Libsa Lephalale No. 3A Venter Street Tel. No. (014) 763 2834	