

# **TENDER BULLETIN**

NO. 28/2016/17 FY

14 October 2016



# LIMPOPO

**PROVINCIAL GOVERNMENT**  
REPUBLIC OF SOUTH AFRICA

**Provincial Supply Chain Management Office**

## TABLE OF CONTENTS

	Page No.
1. REPORTING FRAUDULENT AND CORRUPT ACTIVITIES.....	03
2. INSTRUCTIONS.....	04
3. BID INVITATIONS FOR SUPPLIES, SERVICES AND DISPOSALS .....	05 —10
5. SPECIAL NOTICES.....	11 —14
ANNEXURE 1: ADDRESS LIST AND CONTACT DETAILS: PROVINCIAL DEPARTMENTS.....	15
ANNEXURE 2: ADDRESS LIST AND CONTACT DETAILS: PUBLIC ENTITIES.....	16
ANNEXURE 3: ADDRESS LIST AND CONTACT DETAILS: PROVINCIAL TREASURY TENDER ADVICE CENTRES .....	17
ANNEXURE 4: ADDRESS LIST AND CONTACT DETAILS: SATELLITE OFFICES .....	18

**REPORT**

**FRAUDULENT & CORRUPT ACTIVITIES ON GOVERNMENT PROCUREMENT SYSTEM**

---

**National Anti-Corruption @ 0800 701 701**

**Security and Investigating Services – Limpopo Provincial Treasury**

**@ 015 298 7196**

---

**ALL COMPLAINTS/CONCERNS RELATED TO SCM NON-COMPLIANCE MUST BE REPORTED TO:**

**LIMPOPO PROVINCIAL TREASURY**

**PRIVATE BAG X 9486**

**POLOKWANE**

**0700**

**PROVINCIAL TREASURY, FINANCE HOUSE**

**56 – 58 PAUL KRUGER STREET**

**POLOKWANE**

## 2. INSTRUCTIONS

1. Bidders are advised to read the entire tender bulletin.
2. Tenders for procurement of supplies, services and disposals are categorized as follows:

### **SUPPLIES**

- Accommodation, leasing of
- Audio visual equipment
- Building material
- Chemicals: Agricultural/Forestry/  
Laboratory/Water Care
- Clothing/Textiles
- Computer equipment
- Computer software
- Electrical equipment
- Electronic equipment
- Furniture
- General
- Medical
- Office equipment: Labour-saving devices
- Perishable provisions
- Stationary/printing
- Steel
- Timber
- Vehicle (all types)
- Workshop equipment

### **SERVICES**

- Building
- Civil
- Electrical
- Functional (including cleaning-,  
and security services)
- General
- Maintenance of electrical, mechanical  
equipment and plumbing
- Mechanical
- Professional
- Repair and maintenance of vehicles
- Transport

### **DISPOSALS**

- Clothing and textiles
- Furniture
- General
- Scrap metal
- Vehicles

3. Bid documents are generally available in English only.
4. The address where a bid document is available from and where it must be submitted to may differ.
5. The addresses at which bid documents may be obtained and to which tenders must be posted, appear in Annexure 1.
6. The address list of various Supply Chain Management Tender Advice Centers at which bid documents and tender bulletins may also be obtained, appear in Annexure 3; and
7. The address list of Supply Chain Management satellite offices at which tender bulletins may also be obtained, appear in Annexure 4

### 3. BID INVITATIONS FOR SUPPLIES, SERVICES AND DISPOSAL

BID NO.	DESCRIPTION OF SERVICE OR SUPPLIES	CONTACT DETAILS	BID DOCUMENT PRICE (NON-REFUNDABLE)	DUE AT 11H00	BID DOCUMENTS OBTAINABLE FROM	POST OR DELIVER BIDS TO
					See Annexure 1 & 2 Page 15 – 16	

VTVET NO 44/2016	Supply and installation of Backup Electricity Generator (200kva) at Mavhoi Campus  No Briefing Session  <b>VHEMBE COLLEGE</b>	<b>ADMINISTRATION PROCESS</b> ND Maiwashe @ Tel No: 015 963 5156 Email: pa.ceo@vhembecledge.edu.co.za  <b>TECHNICAL ASPECTS</b> N/A	R100-00	14/11/2016	118	118
VTVET NO 45/2016	Purchase and supply of 07 (seven) Photocopier Machines at Tshisimani Campus  No Briefing Session  <b>VHEMBE COLLEGE</b>	<b>ADMINISTRATION PROCESS</b> ND Maiwashe @ Tel No: 015 963 5156 Email: pa.ceo@vhembecledge.edu.co.za  <b>TECHNICAL ASPECTS</b> N/A	R100-00	14/11/2016	118	118
VTVET NO 46/2016	Supply and installation of two (2) Backup Electricity Generator at Tshisimani/ Ramaano Mmbulaheni Campus  No Briefing Session	<b>ADMINISTRATION PROCESS</b>  ND Maiwashe @ Tel No: 015 963 5156 Email:	R100-00	14/11/2016	118	118

		pa.ceo@vhembecledge.ed u.co.za  <b>TECHNICAL ASPECTS</b> N/A				
	<b>VHEMBE COLLEGE</b>					
VTVET NO 47/2016	Purchase and supply of classroom (student) chairs and tables at Shingwedzi Campus  No Briefing Session  <b>VHEMBE COLLEGE</b>	<b>ADMINISTRATION PROCESS</b>  ND Maiwashe @ Tel No: 015 963 5156 Email: pa.ceo@vhembecledge.ed u.co.za  <b>TECHNICAL ASPECTS</b> N/A	R100-00	14/11/2016	118	118
VTVET NO 48/2016	Purchase and supply of clothing production machines at Thengwe Campus  No Briefing Session  <b>VHEMBE COLLEGE</b>	<b>ADMINISTRATION PROCESS</b>  ND Maiwashe @ Tel No: 015 963 5156 Email: pa.ceo@vhembecledge.ed u.co.za  <b>TECHNICAL ASPECTS</b> N/A	R100-00	14/11/2016	118	118
HEDP800/16	Supply, delivery, installation, repair and maintenance of anaesthetic workstation in the Department of Health: Pietersburg Hospital Limpopo Province  <b>Department of Health</b>	<b>ADMINISTRATION PROCESS</b> Ms.NM. Motene @ 015 293 6350/6347 Email @ Ntlama.Maphahlele@dhsd.li mpopo.gov.za  <b>TECHNICAL ASPECTS</b> Ms. M. Matjila @ 015 287 5910	R80-00	11/11/2016	103	103
HEDP812/16	Supply, delivery, installation, repair and maintenance of optical laboratory equipment in the Department of Health: Limpopo Province  <b>Department of Health</b>	<b>ADMINISTRATION PROCESS</b> Ms.NM. Motene @ 015 293 6350/6347 Email @ Ntlama.Maphahlele@dhsd.li mpopo.gov.za  <b>TECHNICAL ASPECTS</b> <b>Mr.TK. Niemand @</b> <b>015 556 3201 EXT 2122</b>	R80-00	11/11/2016	103	103

HEDP825/16	Supply, delivery, installation, repair and maintenance of maxi orthopaedic Drill in the Department of Health: Pietersburg Hospital Limpopo Province  <b>Department of Health</b>	<b>ADMINISTRATION PROCESS</b> Ms. NM. Motene @ 015 293 6350/6347 Email @ Ntlama.Maphahlele@dhsd.limpopo.gov.za  <b>TECHNICAL ASPECTS</b> Ms. M. Matjila @ 015 287 5910	R80-00	11/11/2016	103	103
RAL/2016 INTEGRATED SUPPORT/RFB 004	Appointment of service provider to render Integrated Support Services to Assurance Providers at Roads Agency Limpopo  <b>Roads Agency Limpopo</b>	<b>ADMINISTRATION PROCESS</b> Mr. Matsobane Dinala @ Tel No: 015 284 4628 and Email @ dinalamr@ral.co.za  <b>TECHNICAL ASPECTS</b> Mr. Saimen Suntherason @ Tel No: 015 284 4626 and email @ saimens@ral.co.za	R80-00	04/11/2016	116	116
EDET 206/16	Supply delivery of Radios at various Nature Reserves  <b>Limpopo Economic Development Environment And Tourism</b>	<b>ADMINISTRATION PROCESS</b> Mr.FF Ramoraswi @ 015 293 8766 or Linda Mothutsi @ 015 293 8766  <b>TECHNICAL ASPECTS</b> Mrs.LT Kobe or Mrs. Paulina Moeng @ 015 293 8545	R80-00	01/11/2016	109	109
EDET 207/16	Appointment of service provider for Research and Design of the construction of new Market Stalls in the Limpopo Province  <b>Limpopo Economic Development Environment And Tourism</b>	<b>ADMINISTRATION PROCESS</b> Mr.FF Ramoraswi @ 015 293 8766 or Linda Mothutsi @ 015 293 8766  <b>TECHNICAL ASPECTS</b> Mrs.LT Kobe or Mrs. Paulina Moeng @ 015 293 8545	R80-00	01/11/2016	109	109
EDET 208/16	Appointment of service provider to conduct Due Diligence on performance of the implementation of Reserve Renewal Project	<b>ADMINISTRATION PROCESS</b> Mr.FF Ramoraswi @ 015 293 8766 or Linda Mothutsi @ 015 293 8766	R80-00	01/11/2016	109	109

	<b>Limpopo Economic Development Environment And Tourism</b>	<b>TECHNICAL ASPECTS</b> Mrs.LT Kobe or Mrs. Paulina Moeng @ 015 293 8545				
EDET 209/16	Rendering of Physical Security Service at Rust De Winter Wildlife for a period of three years  <b>Limpopo Economic Development Environment And Tourism</b>	<b>ADMINISTRATION PROCESS</b> Mr.FF Ramoraswi @ 015 293 8766 or Linda Mothutsi @ 015 293 8766  <b>TECHNICAL ASPECTS</b> N/A	R80-00	04/11/2016	109	109
EDET 210/16	Rendering of Physical Security Services at Doorndraai Wildlife for a period of three years  <b>Limpopo Economic Development Environment And Tourism</b>	<b>ADMINISTRATION PROCESS</b> Mr.FF Ramoraswi @ 015 293 8766 or Linda Mothutsi @ 015 293 8766  <b>TECHNICAL ASPECTS</b> N/A	R80-00	04/11/2016	109	109
EDET 211/16	Rendering of Physical Security Services at Mphephu Wildlife for a period of three years  <b>Limpopo Economic Development Environment And Tourism</b>	<b>ADMINISTRATION PROCESS</b> Mr.FF Ramoraswi @ 015 293 8766 or Linda Mothutsi @ 015 293 8766  <b>TECHNICAL ASPECTS</b> N/A	R80-00	04/11/2016	109	109
EDET 212/16	Rendering of Physical Security Services at Nwanedi Wildlife for a period of three years  <b>Limpopo Economic Development Environment And Tourism</b>	<b>ADMINISTRATION PROCESS</b> Mr.FF Ramoraswi @ 015 293 8766 or Linda Mothutsi @ 015 293 8766  <b>TECHNICAL ASPECTS</b> N/A	R80-00	04/11/2016	109	109
EDET 213/16	Rendering of Physical Security Services at Acacia Wildlife for a period of three years  <b>Limpopo Economic Development Environment And Tourism</b>	<b>ADMINISTRATION PROCESS</b> Mr.FF Ramoraswi @ 015 293 8766 or Linda Mothutsi @ 015 293 8766  <b>TECHNICAL ASPECTS</b> N/A	R80-00	04/11/2016	109	109



EDET 214/16	Rendering of Physical Security Services at Nylsvlei Wildlife for a period of three years  <b>Limpopo Economic Development Environment And Tourism</b>	<b>ADMINISTRATION PROCESS</b> Mr.FF Ramoraswi @ 015 293 8766 or Linda Mothutsi @ 015 293 8766  <b>TECHNICAL ASPECTS</b> N/A	R80-00	04/11/2016	109	109
EDET 215/16	Rendering of Physical Security Services at Tambotie Wildlife for a period of three years  <b>Limpopo Economic Development Environment And Tourism</b>	<b>ADMINISTRATION PROCESS</b> Mr.FF Ramoraswi @ 015 293 8766 or Linda Mothutsi @ 015 293 8766  <b>TECHNICAL ASPECTS</b> N/A	R80-00	04/11/2016	109	109
TC/LP01/2016	Supply, delivery, installation, maintenance and testing of office equipment and labour saving devices in all Provincial Departments  <b>Compulsory Briefing Session</b>  <b>Date:</b> 21 October 2016 <b>Venue:</b> Department of Co-operative Governance, Human Settlement & Traditional Affairs <b>Time:</b> 10H00  <b>Limpopo Provincial Treasury</b>	<b>ADMINISTRATION PROCESS</b> Grace Bafedile @ <b>Tel</b> 015 291 8634 <b>Fax</b> 015 295 3310 and <b>Email</b> Bafedileglm@treasury.limpo po.gov.za	R80-00	04/11/2016	101A	101A
EDDP 741	Supply, delivery and installation of 80 interactive white boards  <b>Department of Education</b>	<b>ADMINISTRATION PROCESS</b> Ms. CD Setagane @ 015 290 7752  <b>TECHNICAL ASPECTS</b> Dr.RP Sambo @ 015 291 2662	R80-00	07/11/2016	104	104
EDDP 742	Supply and delivery of set of eating utensils for primary schools at Capricorn and Waterberg District  <b>Department of Education</b>	<b>ADMINISTRATION PROCESS</b> Ms. CD Setagane @ 015 290 7752 <b>TECHNICAL ASPECTS</b> Mr. Sharp TA @ 015 290 7932	R80-00	07/11/2016	104	104

EDDP 743	Supply and delivery of IT Consumables          <b>Department of Education</b>	<b>ADMINISTRATION PROCESS</b> Ms. CD Setagane @ 015 290 7752  <b>TECHNICAL ASPECTS</b> Mr.MG Nelushi @ 015 290 7773	R80-00	07/11/2016	104	104
----------	---	---	--------	------------	-----	-----

## 4. SPECIAL NOTICES

### 4.1. (SCM Advice Centers): LIMPOPO PROVINCIAL TREASURY ADVERTISEMENTS OF LIMPOPO CSD CALL CENTRE LINES FOR SUPPLIERS IN THE TENDER BULLETIN:-

#### LIMPOPO CSD CALL CENTRE LINES FOR SUPPLIERS

DISTRICT	CALL CENTRE NUMBER	OFFICIAL RESPONSIBLE	TIME
Capricorn	015 291 8737	Mr Holeni TI	7H30 TO 16H30
Mopani	015 812 0256	Ms Nxumalo P	7H30 TO 16H30
Sekhukhune	013 265 1071	Mrs Morena MM	7H30 TO 16H30
Vhembe	015 962 0014	Mrs Nefolovhodwe Q	7H30 TO 16H30
Waterberg	014 717 1376	Mrs Tsatsi AT	7H30 TO 16H30

### 4.2. CENTRAL SUPPLIER DATABASE ROADSHOW :- MOPANI SUPPLY CHAIN MANAGEMENT ADVICE CENTRE

(Centralised Supplier Database Roadshow program)

DATE	MUNICIPALITY	VENUE	TARGET	TIME
20/10/2016	Baphalaborwa	Lulekani	SUPPLIERS	10H00

For more information please contact Mbedzi MB at Tel.015 8120149

### 4.3.CENTRAL SUPPLIER DATABASE ROADSHOW :- SEKHUKHUNE SUPPLY CHAIN MANAGEMENT ADVICE CENTRE

(Centralized Supplier Database Roadshow program)

DATE	MUNICIPALITY	VENUE	TARGET	TIME
20/10/2016	Elias Motsoaledi	Municipality	SUPPLIERS	10H00

For more information please contact Sehale MS at Tel.013 265 1344

## 5. ERRATUM

### 5.1. Erratum for the projects advertised on the Provincial Tender Bulletin No. 26/2016/17 dated 30 September 2016, for the Department of Public Works, Roads and Infrastructure.

There is an omission for the CIDB Grading on the following Bids:

- LDPWRI – B/OEM/16010 CIDB GRADING 4ME
- LDPWRI – B/16014 CIDB GRADING 3ME
- LDPWRI – B/16015 CIDB GRADING 4ME
- LDPWRI – B/16016 CIDB GRADING 4ME
- LDPWRI – B/16017 CIDB GRADING 4ME
- LDPWRI – B/16018 CIDB GRADING 4ME

N.B: You are kindly requested to take note of the changes above

### 5.2. RECTIFICATION OF PREFERENCE POINT SYSTEM FOR A BID: HEDP823/16 APPOINTMENT OF A PANEL OF CONTRACTORS TO BE USED AS AND WHEN REQUIRED BY ALL HEALTH FACILITIES TO PROVIDE INFRASTRUCTURE MAINTENANCE AND REFURBISHMENT SERVICES FOR THE PRIMARY HEALTH CARE (PHC); COMMUNITY HEALTH CENTRES (CHCs); FORENSIC PATHOLOGY SERVICES (FPS); EMERGENCY MEDICAL SERVICES (EMS); MALARIA CENTRES, DISTRICT OFFICES, PROVINCIAL HEAD OFFICE, NURSING COLLEGES, SCHOOLS AND HOSPITALS

Rectification preference points system of the above-mentioned Bid which was advertised on Tender Bulletin no.25/2016/17 dated 23 September 2016.

INITIAL PREFERENCE POINTS SYSTEM	NEW PREFERENCE POINTS SYSTEM
80/20	90/10

## 6. LIST OF AWARDED BIDS

### 6.1. DEPARTMENT OF AGRICULTURE: BID NO. 16/04: CONSTRUCTION OF A NEW ACADEMIC AREA WITH LECTURE HALLS, COMPUTER LABORATORIES, ABLUTION FACILITIES, AND OFFICES WITH SERVICES AND PAVING FOR THE MADZIVHANDILA COLLEGE OF AGRICULTURE IN THE THULAMELA MUNICIPAL AREA OF THE VHEMBE DISTRICT

Bid No.	Description of Service	Service Provider	Date of Award	Amount Awarded	Points Scored
ACDP 16/04	Construction of a New Academic Area with Lecture Halls, Computer Laboratories, Ablution facilities and Offices with Services & Paving for the Madzivhandila Agricultural College in Thulamela Municipality of Vhembe District.	JJ & Company JV Shao Holdings	04/10/2016	R26 306 237.58	99.00

**6.2. PUBLIC WORKS, ROADS AND INFRASTRUCTURE :AWARDED BID(S) ABOVE R500 000.00 FOR 2016-2017**

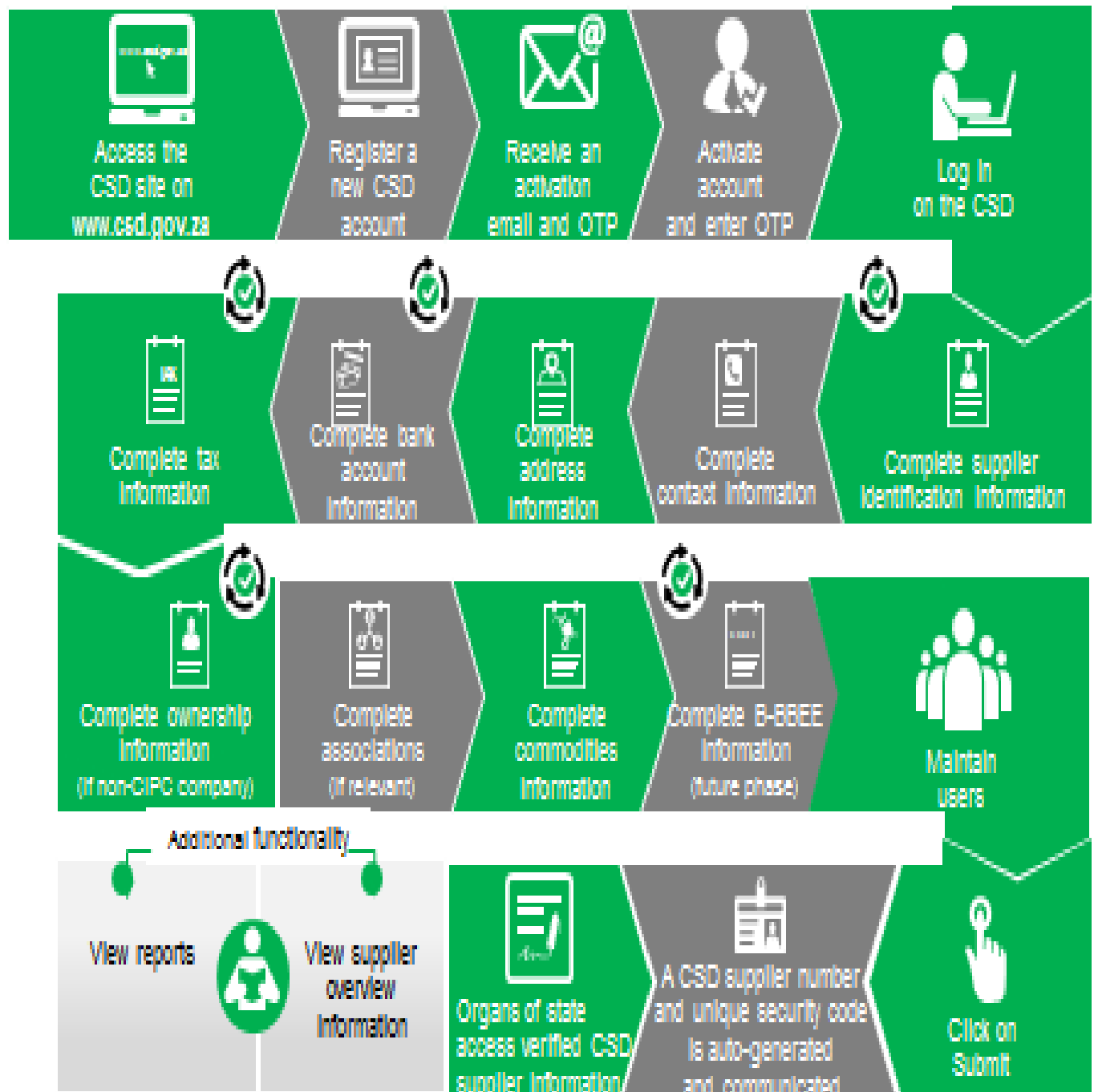
PROJECT No.	DESCRIPTION	AWARDED BIDDER	AMOUNT	TOTAL POINTS ATTAINED	DATE AWARDED
LDPWRI-ROADS/15007	Supply and Delivery of concrete pipes and box culverts for roads maintenance for a period of three years for the Department of Public Works, Roads and Infrastructure	OSZ Tayob Pietersburg Trading	As per rates based	94	19.08.2016
LDPWRI-ROADS/15006	Supply and delivery of roads signs for roads maintenance for a period of three years for Department of Public Works, Roads and Infrastructure.	Nzuza Signs JV	As per rates based	100	19.08.2016

**6.3. AWARDED BID: LPT 002/2015: SUPPLY AND INSTALLATION OF AN ENTERPRISE DATA PROTECTION SOLUTION FOR THE BACKUP AND RESTORE OF DESKTOP AND LAPTOP COMPUTERS: LIMPOPO PROVINCIAL TREASURY**

Kindly be informed that the above-mentioned bid which was advertised in bulletin No.09/2016/17 FY dated 03 June 2016 has been concluded and awarded as follows:

Bid Number		Description of Service	Awarded Bidder	Amount	Total Points	Date Awarded
1	LPT 02/2015	LPT 002/2015: supply and installation of an Enterprise Data Protection Solution for the backup and restore of desktop and laptop computers  <b>Limpopo Provincial Treasury</b>	Leishan IT Consultancy cc	R420 945.00	90	07 October 2016

# Supplier Self-Registration Process



⚠️ Auto verification of supplier information with SARS, CIPC etc.

**ANNEXURE 1: ADDRESS LIST AND CONTACT DETAILS: LIMPOPO PROVINCIAL DEPARTMENTS**

UNIQUE REF. NO.	BID DOCUMENT REFERENCE	CONTACT DETAILS	DOCUMENTS SOLD AT:	DOCUMENTS DEPOSITED AT
100	DSDP	Tel: 015 293 6000 Fax: 015 293 6211 Website: <a href="http://www.limpopo.gov.za">www.limpopo.gov.za</a>	<b>Department of Social Development</b> , Office No. D3 Ground Floor, Old Capricorn Building, 18 College Street, POLOKWANE and all Provincial Treasury Tender Advice Centers	Deposited in the box located at Department of Health and Social Development, 18 College Street, Polokwane
101	LPT	Tel: 015 298 7000 Fax: 015 295 7010 Website: <a href="http://www.limpopo.gov.za">www.limpopo.gov.za</a>	<b>Provincial Treasury</b> 56 – 58 Paul Kruger Street, POLOKWANE and all Provincial Treasury Tender Advice Centers	Deposited in the bid box located outside a guard house at Ismini Towers, 46 Hans Van Rensburg Street, Polokwane
101A	TC/LP	Tel: 015 291 8400 Fax: 015 295 3310 Website: <a href="http://www.limpopo.gov.za">www.limpopo.gov.za</a>	<b>Provincial Treasury</b> 56 – 58 Paul Kruger Street, POLOKWANE and all Provincial Treasury Tender Advice Centers	Deposited in the bid box located in the main entrance, Finance House Building, 56-58 Paul Kruger Street, Polokwane
102	PRDP	Tel: 015 287 6000 Fax: 015 295 3840 Website: <a href="http://www.limpopo.gov.za">www.limpopo.gov.za</a>	<b>Office of the Premier</b> , 40 Hans van Rensburg Street, POLOKWANE and all SCM Advice Centers	Deposited in the bid box located at Mowaneng Building, 40 Hans van Rensburg Street, Polokwane
103	HEDP	Tel: 015 293 6000 Fax: 015 293 6211 Website: <a href="http://www.limpopo.gov.za">www.limpopo.gov.za</a>	<b>Department of Health</b> , Office No. D3 Ground Floor, Old Capricorn Building, 18 College Street, POLOKWANE and all Provincial Treasury Tender Advice Centers	Deposited in the box located at Department of Health and Social Development, 18 College Street, Polokwane
104	LPEDT	Tel: 015 290 7600/1 Fax: 015 297 4494 Website: <a href="http://www.limpopo.gov.za">www.limpopo.gov.za</a>	<b>Department of Education</b> , Corner 113 Biccadd and 24 Excelsior Streets, POLOKWANE and all Provincial Treasury Tender Advice Centers	Deposited in the bid box located in the main entrance of corner 113 Biccadd Street and Excelsior Street, Polokwane
105	PUDP	Tel: 015 295 1000 Fax: 015 295 1163 Website: <a href="http://www.limpopo.gov.za">www.limpopo.gov.za</a>	<b>Department of Roads &amp; Transport</b> , 40 Paul Kruger Street, POLOKWANE and all Provincial Treasury Tender Advice Centers	Deposited in the bid box located at Phamoko Building, 39 corner Church and Bodenstein Street, Polokwane
106	DSSL	Tel: 015 290 2900 Fax: 015 291 4452 Website: <a href="http://www.limpopo.gov.za">www.limpopo.gov.za</a>	<b>Department of Safety, Security and Liaison</b> , 32 Schoeman Street, POLOKWANE and all Provincial Treasury Tender Advice Centers	Deposited in the bid box located in the main entrance of 32 Schoeman Street, Polokwane
107	COGHSTA	Tel: 015 294 2000 Fax: 015 295 4190 Website: <a href="http://www.limpopo.gov.za">www.limpopo.gov.za</a>	<b>Department of Co-Operative Governance, Human Settlements &amp; Traditional Affairs</b> , 28 Market Street, Office No. G 74, Ground Floor, Polokwane.	Deposited in the bid box located at Hensa Towers, Cnr of Rabe and Landdros Mare Streets, Polokwane
108	DSAC	Tel: 015 284 4000 Fax: 015 284 4514 Website: <a href="http://www.limpopo.gov.za">www.limpopo.gov.za</a>	<b>Department of Sport, Arts and Culture</b> Olympic Towers, Corner Rabe and Biccadd Street, POLOKWANE and all Provincial Treasury Tender Advice Centre	Deposited in the bid box located in the main entrance of Olympic Towers, Corner 21 Rabe and Biccadd Street, Polokwane
109	LEDET	Tel: 015 293 8300 Fax: 015 293 8319 Website: <a href="http://www.limpopo.gov.za">www.limpopo.gov.za</a>	<b>Department of Economic Development, Environment &amp; Tourism</b> , 90 Bok Street, POLOKWANE and all SCM Advice Centers	Deposited in the bid box located at Evridiki Towers, 19 Biccadd Street, Polokwane
110	LDPW & WODP	Tel: 015 284 7000 Fax: 015 284 7031 Website: <a href="http://www.limpopo.gov.za">www.limpopo.gov.za</a>	<b>Department of Public Works</b> , Works Towers, 43 Church Street, POLOKWANE and all Provincial Treasury Tender Advice Centers	Deposited in the bid box located at Corner Blaawberg and River Street Ladanna Polokwane 0699 Private Bag X9490 Polokwane 0700
111	ACDP	Tel: 015 294 3000/30/60/90/20 Fax: 015 294 4506 Website: <a href="http://www.limpopo.gov.za">www.limpopo.gov.za</a>	<b>Department of Agriculture</b> , Temo Towers, 69 Biccadd Street, POLOKWANE and all Provincial Treasury Tender Advice Centers	Deposited in the bid box located in the main entrance of AgriVillage, 69 Biccadd Street, Polokwane

**ANNEXURE 2: ADDRESS LIST AND CONTACT DETAILS: LIMPOPO PUBLIC ENTITIES**

UNIQUE REF. NO.	BID DOCUMENT REFERENCE	CONTACT DETAILS	DOCUMENTS SOLD AT:	DOCUMENTS DEPOSITED AT
112	RFB: LIMP	Tel: 015 293 3621 Fax: 015 293 3660 Website: <a href="http://www.golimpopo.co">www.golimpopo.co</a>	<b>State Information Technology Agency (SITA)</b> Limpopo Office, Moolman Building, 27 Market Street, POLOKWANE, 0699	Bid box located in the Main Entrance of Moolman Building, 27 Market Street, Polokwane
113	LTA	Tel: 015 293 3600 Fax: 015 293 3655 Website: <a href="http://www.golimpopo.com">www.golimpopo.com</a>	<b>Limpopo Tourism Agency</b> , ERF 92/688, Portion 2 Southern Gateway, Ext 4, N1 Main Road, Polokwane 0699	Bid box located in the offices ERF 92/688, Portion 2 Southern Gateway, Ext 4, N1 Main Road, Polokwane 0699
114	LGB	Tel: 015 295 5581 Fax: 015 295 3566 Website: <a href="http://www.lgb.org">www.lgb.org</a>	<b>Limpopo Gambling Board</b> , 08 Hans van Rensburg Street, POLOKWANE, 0700 from 08H30 to 16H00	Bid box located in the main entrance, ground floor, 08 Hans van Rensburg Street, Polokwane 0700
115	LEDA	Tel: 015 633 4700 Fax: 015 633 4854 Website: <a href="http://www.leda.co.za">www.leda.co.za</a>	<b>Limpopo Economic Development Agency</b> Enterprise Development Finance, Main Road, Lebowakgomo	Bid box located in the main entrance, Enterprise Development Finance, Main Road, Lebowakgomo
116	RAL	Tel: 015 284 4600 Fax: 015 284 4701 Website: <a href="http://www.ral.co.za">www.ral.co.za</a>	<b>Road Agency Limpopo (RAL)</b> , RAL Towers, 26 Rabe Street, POLOKWANE, 0700	Bid box located in the entrance foyer (ground floor) of RAL Towers, at 26 Rabe Street, Polokwane
117	GAAL	Tel: 015 288 0122 Fax: 015 288 0346 Website: <a href="http://www.gaal.co.za">www.gaal.co.za</a>	<b>Gateway Airports Authority Limited</b> , N1 Road to Louis Trichardt, Army Base, POLOKWANE International Airport, Polokwane, 0700	Bid box located in the main entrance, ground floor of administration building, Polokwane International Airport, Army Base
118	VIVET	Tel: 015 963 3156 Fax: 015 963 3154 Website: <a href="mailto:www.fetcol@mweb.co.za">www.fetcol@mweb.co.za</a>	<b>Vhembe FET College</b> , Stand No. 203, Unit A, Sibasa, 0970, Limpopo Province	Vhembe FET College, Central Office, Private Bag X2136, SIBASA 0970
119	WTVET	Tel: 015 491 8581 / 8602 Fax: 015 491 8579 Website: <a href="mailto:www.procurement@waterbergcollege.co.za">www.procurement@waterbergcollege.co.za</a>	<b>Waterberg FET College</b> , Central Office, 36 Hooge Street, Mokopane 0600	<b>Waterberg FET College</b> , Central Office, 36 Hooge Street, Mokopane Private Bag X 2449, Mokopane 0600



**ANNEXURE 3: ADDRESS LIST AND CONTACT DETAILS: PROVINCIAL TREASURY TENDER ADVICE CENTRES**

(Tender bulletins and bid documents are obtainable from the following Centers):

PROVINCIAL TREASURY SUPPLY CHAIN MANAGEMENT ADVICE CENTRES	
<b>HEAD OFFICE</b>  Provincial Supply Chain Management Office 56 & 58 Paul Kruger Street POLOKWANE Private Bag x9494 <b>POLOKWANE, 0700</b> <b>Tel No. (015) 291 8400</b>  Contact: <b>Ms. M.B. Malope</b> @ Tel: 015 291 8717/6	<b>Capricorn SCM Advice Centre</b>  Limpopo Provincial Treasury 56 & 58 Paul Kruger Street Private Bag x9494 <b>POLOKWANE, 0700</b> <b>Tel No. (015) 291 8400</b>  Contact Person: <b>Ms. M.M. Masindi</b>
<b>Vhembe SCM Advice Centre</b>  Limpopo Provincial Treasury Government Building Complex Block E Ground Floor <b>THOHOYANDOU, VENDA</b> Tel: (015) 962 1752 Fax: (015) 962 1282  Contact Person: <b>Ms. A. Budeli</b>	<b>Mopani SCM Advice Centre</b>  Limpopo Provincial Treasury Private Bag X 1973 <b>GIYANI, 0826</b> Tel: (015) 812 0149 Fax: 086 219 7905  Contact Person: <b>Mr. M. B. Mbedzi</b>
<b>Waterberg SCM Advice Centre</b>  Limpopo Provincial Treasury 98 Nelson Mandela Street Decimale Building <b>MODIMOLLE</b> Tel: (014) 717 5837 Fax: (014) 717 5670  Contact Person: <b>Mr. P.E. Mogoroga</b>	<b>Sekhukhune SCM Advice Centre</b>  Limpopo Provincial Treasury Lefa Centre, Schoonoord Road <b>JANE FURSE</b> Tel: (013) 265 1344 Fax: (013) 265 1354  Contact Person: <b>Mr. M.S. Sehale</b>

**ANNEXURE 4: ADDRESS LIST AND CONTACT DETAILS: SATELLITE OFFICES**

(Tender bulletins are obtainable from the following centers)

<b>CAPRICORN</b>	<b>VHEMBE</b>	<b>MOPANI</b>	<b>WATERBERG</b>	<b>SEKHUKHUNE</b>
Lebowakgomo LIBSA	Dzanani Revenue Office Tel. No. (015) 970 4969	Namakgale Revenue Office Tel. No. (015) 761 3119	LIBSA Thabazimbi: No.08 Riet Bok Street Tel. No. (014) 772 2437	Tubatse LIBSA Tubatse Municipality Tel. No. (013) 231 8530
Seshego (Economic Dev. Offices Zone 8) Tel. No. (015) 223 7990	Malamulele Revenue Office Tel. No. (015) 871 0608	Ritavi DCO Tel. No. (015) 303 0455	LIBSA Lephalale No. 3A Venter Street Tel. No. (014) 763 2834	Fetakgomo LIBSA Fetakgomo Municipality Tel. No. (015) 622 8904
Ga-Thoka (Department of Economic Development)	Musina Revenue Office Tel. No. (015) 534 2713	Naphuno Magistrate Office Tel. No. (015) 355 4972	Bela-Bela Local Municipality (Bela-Bela) Tel. No. (014) 736 8000	Atok Thusong Service Centre Atok
Senoamadi Complex- Morebeng next to Taxi Rank-Economic Development Offices Contact Mr. Pheha @ 084 602 423	Mutale Revenue Office Tel. No. 072 252 7153	Lulekani Magistrate Offices Tel. No. (015) 783 0486	Mookgophong Local Municipality (Mookgopong) Tel. No. (014) 743 1111	Maatla-ke batho LIBSA Marblehall Tel. No. (013) 261 2642
Bochum: LIBSA	Soutpansberg Revenue Office Tel. No. (015) 516 0002	Economic Development Offices in Tzaneen 20b Peace Street, Cnr Peace and Hermanus Tel. No. (015) 307 1195	LIBSA Mokopane 90 Retief Street Tel. 015 491 8582 Fax: 015 491 8584	SEDA Groblersdal Tel. No. (013) 262 3651
Mathabatha Tribal Authority Ga-Mathabatha	Tshilwavhusiku Revenue Office (015) 571 5277	Bolobedu Revenue Office Tel. No. (015) 328 3377		
Mafeke Tribal Authority MAFEFE	Tshitale Revenue Office Tel. No. (015) 975 1717	Hlanganani Revenue Office operating within Khomanani Tribal Authority at Majosi. Tel. No. 072 304 3916		
	Vuwani- Revenue Office Tel. No. 072 058 1910			