

TENDER BULLETIN

NO. 38/2015/16 FY

05 FEBRUARY 2016



LIMPOPO

PROVINCIAL GOVERNMENT
REPUBLIC OF SOUTH AFRICA

Provincial Supply Chain Management Office

TABLE OF CONTENTS

	Page No.
1. REPORTING FRAUDULENT AND CORRUPT ACTIVITIES.....	03
2. INSTRUCTIONS.....	04
3. BID INVITATIONS FOR SUPPLIES, SERVICES AND DISPOSALS	05
4. SPECIAL NOTICES.....	06-07
ANNEXURE 1: ADDRESS LIST AND CONTACT DETAILS: PROVINCIAL DEPARTMENTS.....	08
ANNEXURE 2: ADDRESS LIST AND CONTACT DETAILS: PUBLIC ENTITIES.....	09
ANNEXURE 3: ADDRESS LIST AND CONTACT DETAILS: PROVINCIAL TREASURY TENDER ADVICE CENTRES	10
ANNEXURE 4: ADDRESS LIST AND CONTACT DETAILS: SATELLITE OFFICES	11

REPORT

FRAUDULENT & CORRUPT ACTIVITIES ON GOVERNMENT PROCUREMENT SYSTEM

National Anti-Corruption @ 0800 701 701

**Security and Investigating Services – Limpopo Provincial Treasury
@ 015 298 7196**

ALL COMPLAINTS/CONCERNS RELATED TO SCM NON-COMPLIANCE

MUST BE REPORTED TO:

THE SENIOR MANAGER

LIMPOPO PROVINCIAL TREASURY

PRIVATE BAG X 9486

POLOKWANE

0700

Tel No: 015 291 8705

ATTENTION: MAHLATJI MD

OFFICE NO. 216

OFFICE HOURS: 7H30-16H30

PROVINCIAL TREASURY, FINANCE HOUSE

56 – 58 PAUL KRUGER STREET

POLOKWANE

2. INSTRUCTIONS

1. Bidders are advised to read the entire tender bulletin.
2. Tenders for procurement of supplies, services and disposals are categorized as follows:

SUPPLIES

- Accommodation, leasing of
- Audio visual equipment
- Building material
- Chemicals: Agricultural/Forestry/Laboratory/Water Care
- Clothing/Textiles
- Computer equipment
- Computer software
- Electrical equipment
- Electronic equipment
- Furniture
- General
- Medical
- Office equipment: Labour-saving devices
- Perishable provisions
- Stationary/printing
- Steel
- Timber
- Vehicle (all types)
- Workshop equipment

SERVICES

- Building
- Civil
- Electrical
- Functional (including cleaning-, and security services)
- General
- Maintenance of electrical, mechanical equipment and plumbing
- Mechanical
- Professional
- Repair and maintenance of vehicles
- Transport

DISPOSALS

- Clothing and textiles
- Furniture
- General
- Scrap metal
- Vehicles

3. Bid documents are generally available in English only.
4. The address where a bid document is available from and where it must be submitted to may differ.
5. The addresses at which bid documents may be obtained and to which tenders must be posted, appear in Annexure 1.
6. The address list of various Supply Chain Management Tender Advice Centers at which bid documents and tender bulletins may also be obtained, appear in Annexure 3; and
7. The address list of Supply Chain Management satellite offices at which tender bulletins may also be obtained, appear in Annexure 4.

3. BID INVITATIONS FOR SUPPLIES, SERVICES AND DISPOSALS

BID NO.	DESCRIPTION OF SERVICE OR SUPPLIES	CONTACT DETAILS	BID DOCUMENT PRICE (NON-REFUNDABLE)	DUE AT 11H00	BID DOCUMENTS OBTAINABLE FROM	POST OR DELIVER BIDS TO
					See Annexure 1 & 2 Page 08 – 09	
EDET 179/16	Appointment of a potential Service Provider to capture and remove Game on Provincial Nature Reserve LEDET	BIDDING PROCESS Mr Ramoraswi F.F @ 015 293 8759 Ms Linda Mothutsi @ 015 293 8766	R80-00	01 March 2016	109	109
CCTVE T 2015/04	Design and supply of 19 000 of student diaries 80/20 preferential point system Compulsory Briefing Session Date: 16 FEBRUARY 2016 Venue:16 Market Street Polokwane Time : 09H00 Capricorn College for TVET	BIDDING PROCESS Mr. Rudzani Ravhuanzwo @015 230 1800/1832 TECHNICAL ASPECTS Mr. Malapane PS @ 015 230 1800/1807	NOT AVAILABLE	Wednesday 16 MARCH 2016, 11h00	NOT AVAILABLE	16 Market Street Polokwane
EDDP 730	Supply and delivery of EMIS Technology Equipment NB.This Bid is a closed Tender and is open for SITA accredited Contract 285/1 only	BIDDING PROCESS Ms C.D Setagane @015 290 7752 TECHNICAL ASPECTS Mr F Ramphele @ 015 290 9421	R80-00	18 February 2016	104	104
EDDP 731	Supply and delivery of 170 Data Projectors NB.This Bid is a closed Tender and is open for SITA accredited Contract 285/1 only	BIDDING PROCESS Ms C.D Setagane @015 290 7752 TECHNICAL ASPECTS Dr R.P Sambo @ 015 290 2662	R80-00	18 February 2016	104	104

6. SPECIAL NOTICES

**6.1 CENTRALISED SUPPLIER DATABASE ROADSHOWS
(CAPRICORN DISTRICT)**

DATE	MUNICIPALITY	VENUE	TARGET	TIME
11/02/2016	Aganang	Aganang municipality	SUPPLIERS	10H00
25/02/2016	Molemole	Molemole municipality	SUPPLIERS	10H00

For more information please contact Ms Masindi MM at Tel. 015 2918424

(WATERBERG DISTRICT)

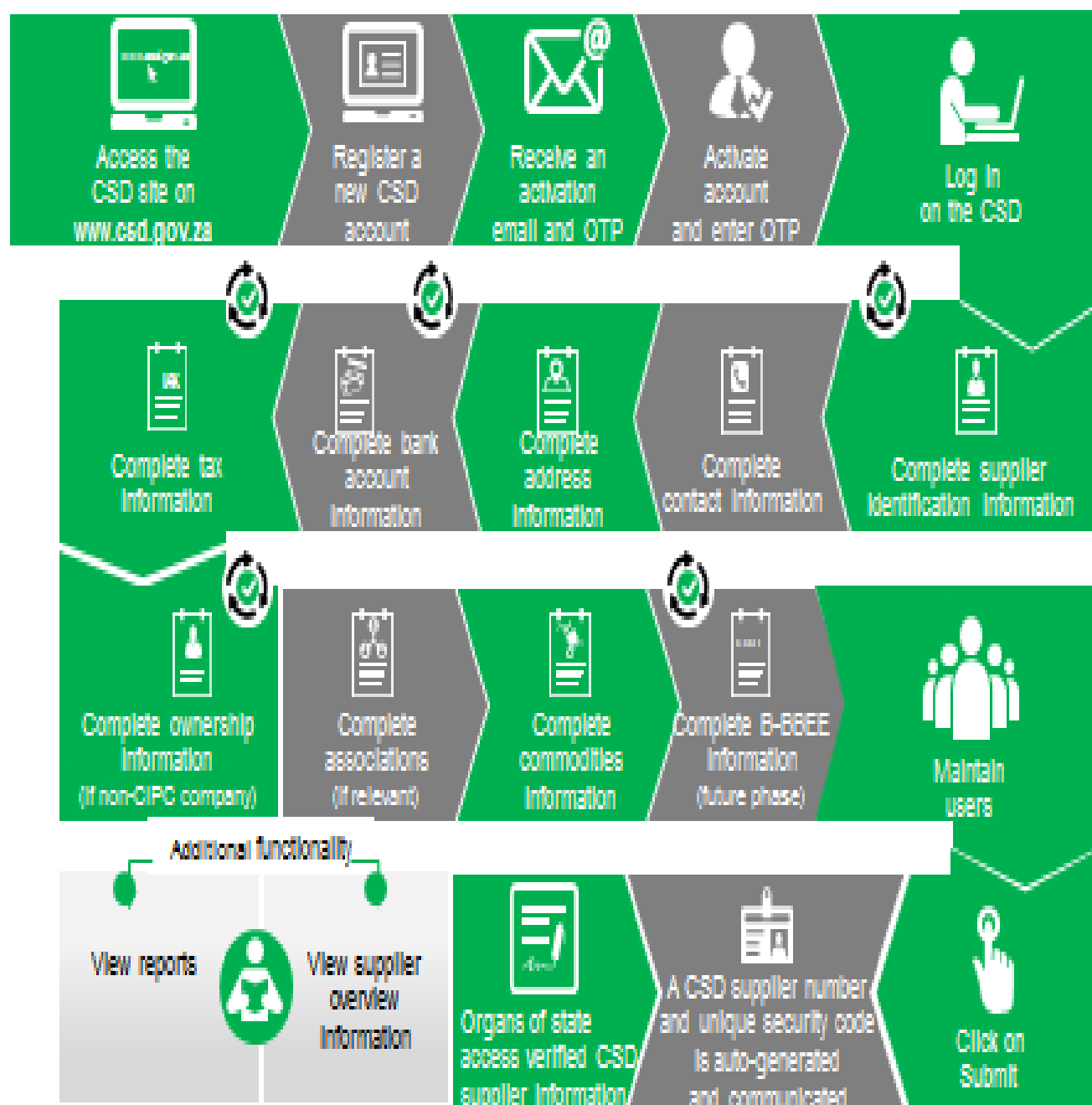
DATE	MUNICIPALITY	VENUE	TARGET	TIME
10/02/2016	Mogalakwena	Mokopane Thusong Service Center	SUPPLIERS	10H00

For more information please contact Mr Mogoroga PE at Tel. 014 7175837

6.2 INVITATION TO ALL SUPPLIERS TO REGISTER ONTO THE NATIONAL CENTRALISED SUPPLIER DATABASE.

1. All suppliers are invited to come and register on the National Centralised Supplier Database. Suppliers can be assisted from the following offices with registration:
 - a) SEDA offices throughout the province
 - b) Tender Advice Centres or Provincial Treasury Offices in all the district offices. See address list at the back of the Tender Bulletin.
 - c) All government offices where there are SCM office, there are people assigned to assist suppliers with registration onto the database.

Supplier Self-Registration Process



ANNEXURE 1: ADDRESS LIST AND CONTACT DETAILS: LIMPOPO PROVINCIAL DEPARTMENTS

UNIQUE REF. NO.	BID DOCUMENT REFERENCE	CONTACT DETAILS	DOCUMENTS SOLD AT:	DOCUMENTS DEPOSITED AT
100	DSDP	Tel: 015 293 6000 Fax: 015 293 6211 Website: www.limpopo.gov.za	Department of Social Development , Office No. D3 Ground Floor, Old Capricorn Building, 18 College Street, POLOKWANE and all Provincial Treasury Tender Advice Centers	Deposited in the box located at Department of Health and Social Development, 18 College Street, Polokwane
101	LPT	Tel: 015 298 7000 Fax: 015 295 7010 Website: www.limpopo.gov.za	Provincial Treasury 56 – 58 Paul Kruger Street, POLOKWANE and all Provincial Treasury Tender Advice Centers	Deposited in the bid box located outside a guard house at Ismini Towers, 46 Hans Van Rensburg Street, Polokwane
101A	TC/LP	Tel: 015 291 8400 Fax: 015 295 3310 Website: www.limpopo.gov.za	Provincial Treasury 56 – 58 Paul Kruger Street, POLOKWANE and all Provincial Treasury Tender Advice Centers	Deposited in the bid box located in the main entrance, Finance House Building, 56-58 Paul Kruger Street, Polokwane
102	PRDP	Tel: 015 287 6000 Fax: 015 295 3840 Website: www.limpopo.gov.za	Office of the Premier , 40 Hans van Rensburg Street, POLOKWANE and all SCM Advice Centers	Deposited in the bid box located at Mowaneng Building, 40 Hans van Rensburg Street, Polokwane
103	HEDP	Tel: 015 293 6000 Fax: 015 293 6211 Website: www.limpopo.gov.za	Department of Health , Office No. D3 Ground Floor, Old Capricorn Building, 18 College Street, POLOKWANE and all Provincial Treasury Tender Advice Centers	Deposited in the box located at Department of Health and Social Development, 18 College Street, Polokwane
104	LPEDT	Tel: 015 290 7600/1 Fax: 015 297 4494 Website: www.limpopo.gov.za	Department of Education , Corner 113 Biccadd and 24 Excelsior Streets, POLOKWANE and all Provincial Treasury Tender Advice Centers	Deposited in the bid box located in the main entrance of corner 113 Biccadd Street and Excelsior Street, Polokwane
105	PUDP	Tel: 015 295 1000 Fax: 015 295 1163 Website: www.limpopo.gov.za	Department of Roads & Transport , 40 Paul Kruger Street, POLOKWANE and all Provincial Treasury Tender Advice Centers	Deposited in the bid box located at 1 st Floor, Paul Kruger Wing, 40 Paul Kruger Street, Polokwane
106	DSSL	Tel: 015 290 2900 Fax: 015 291 4452 Website: www.limpopo.gov.za	Department of Safety, Security and Liaison , 32 Schoeman Street, POLOKWANE and all Provincial Treasury Tender Advice Centers	Deposited in the bid box located in the main entrance of 32 Schoeman Street, Polokwane
107	COGHSTA	Tel: 015 294 2000 Fax: 015 295 4190 Website: www.limpopo.gov.za	Department of Co-Operative Governance, Human Settlements & Traditional Affairs , 28 Market Street, Office No. G 74, Ground Floor, Polokwane.	Deposited in the bid box located at Hensa Towers, Cnr of Rabe and Landdros Mare Streets, Polokwane
108	DSAC	Tel: 015 284 4000 Fax: 015 284 4514 Website: www.limpopo.gov.za	Department of Sport, Arts and Culture Olympic Towers, Corner Rabe and Biccadd Street, POLOKWANE and all Provincial Treasury Tender Advice Centre	Deposited in the bid box located in the main entrance of Olympic Towers, Corner 21 Rabe and Biccadd Street, Polokwane
109	LEDET	Tel: 015 293 8300 Fax: 015 293 8319 Website: www.limpopo.gov.za	Department of Economic Development, Environment & Tourism , 90 Bok Street, POLOKWANE and all SCM Advice Centers	Deposited in the bid box located in the main entrance of Evridiki Towers, 20 Hans Van Rensburg Street, Polokwane
110	LDPW & WODP	Tel: 015 284 7000 Fax: 015 284 7031 Website: www.limpopo.gov.za	Department of Public Works , Works Towers, 43 Church Street, POLOKWANE and all Provincial Treasury Tender Advice Centers	Deposited in the bid box located at Corner Blaawberg and River Street Ladanna Polokwane 0699 Private Bag X9490 Polokwane 0700
111	ACDP	Tel: 015 294 3000/30/60/90/20 Fax: 015 294 4506 Website: www.limpopo.gov.za	Department of Agriculture , Temo Towers, 69 Biccadd Street, POLOKWANE and all Provincial Treasury Tender Advice Centers	Deposited in the bid box located in the main entrance of AgriVillage, 69 Biccadd Street, Polokwane

ANNEXURE 2: ADDRESS LIST AND CONTACT DETAILS: LIMPOPO PUBLIC ENTITIES

UNIQUE REF. NO.	BID DOCUMENT REFERENCE	CONTACT DETAILS	DOCUMENTS SOLD AT:	DOCUMENTS DEPOSITED AT
112	RFB: LIMP	Tel: 015 293 3621 Fax: 015 293 3660 Website: www.golimpopo.co	State Information Technology Agency (SITA) Limpopo Office, Moolman Building, 27 Market Street, POLOKWANE, 0699	Bid box located in the Main Entrance of Moolman Building, 27 Market Street, Polokwane
113	LTA	Tel: 015 293 3600 Fax: 015 293 3655 Website: www.golimpopo.com	Limpopo Tourism Agency , ERF 92/688, Portion 2 Southern Gateway, Ext 4, N1 Main Road, Polokwane 0699	Bid box located in the offices ERF 92/688, Portion 2 Southern Gateway, Ext 4, N1 Main Road, Polokwane 0699
114	LGB	Tel: 015 295 5581 Fax: 015 295 3566 Website: www.lgb.org	Limpopo Gambling Board , 08 Hans van Rensburg Street, POLOKWANE, 0700 from 08H30 to 16H00	Bid box located in the main entrance, ground floor, 08 Hans van Rensburg Street, Polokwane 0700
115	TIL	Tel: 015 295 5171 Fax: 015 295 5197 Website: www.til.co.za	Trade and Investment Limpopo 130A Marshall Street, POLOKWANE, 0699	Bid box located in the main entrance, ground floor, 130 A Marshall Street, Polokwane
116	LIBSA	Tel: 015 287 3000 Fax: 015 297 6732 Website: www.libsa.co.za	Limpopo Business Support Agency , 06 Platinum Street, Ladine, POLOKWANE, 0700	Bid box located in the main entrance, 06 Platinum Street, Ladine, Polokwane
117	RAL	Tel: 015 284 4600 Fax: 015 284 4701 Website: www.ral.co.za	Road Agency Limpopo (RAL) , RAL Towers, 26 Rabe Street, POLOKWANE, 0700	Bid box located in the entrance foyer (ground floor) of RAL Towers, at 26 Rabe Street, Polokwane
118	LADC	Tel: 015 296 3543 Fax: 015 296 3549 Website: www.limpopo.gov.za	Limpopo Agribusiness Development Corporation , 29 Rhodes Drist Street, Bendor, POLOKWANE, 0699	Bid box located in the main entrance, 29 Rhodes Drist Street, Bendor, Polokwane,
119	GAAL	Tel: 015 288 0122 Fax: 015 288 0346 Website: www.gaal.co.za	Gateway Airports Authority Limited , N1 Road to Louis Trichardt, Army Base, POLOKWANE International Airport, Polokwane, 0700	Bid box located in the main entrance, ground floor of administration building, Polokwane International Airport, Army Base
120	VIVET	Tel: 015 963 3156 Fax: 015 963 3154 Website: www.fetcol@mweb.co.za	Vhembe FET College , Stand No. 203, Unit A, Sibasa, 0970, Limpopo Province	Vhembe FET College, Central Office, Private Bag X2136, SIBASA 0970
121	WTVET	Tel: 015 491 8581 / 8602 Fax: 015 491 8579 Website: www.procurement@waterbergcollege.co.za	Waterberg FET College , Central Office, 36 Hooge Street, Mokopane 0600	Waterberg FET College , Central Office, 36 Hooge Street, Mokopane Private Bag X 2449, Mokopane 0600

ANNEXURE 3: ADDRESS LIST AND CONTACT DETAILS: PROVINCIAL TREASURY TENDER ADVICE CENTRES

(Tender bulletins and bid documents are obtainable from the following Centers):

PROVINCIAL TREASURY SUPPLY CHAIN MANAGEMENT ADVICE CENTRES	
<p>HEAD OFFICE</p> <p>Provincial Supply Chain Management Office 56 & 58 Paul Kruger Street POLOKWANE Private Bag x9494 POLOKWANE, 0700 Tel No. (015) 291 8400</p> <p>Contact: Ms. M.B. Malope @ Tel: 015 291 8717/6</p>	<p>Capricorn SCM Advice Centre</p> <p>Limpopo Provincial Treasury 56 & 58 Paul Kruger Street Private Bag x9494 POLOKWANE, 0700 Tel No. (015) 291 8400</p> <p>Contact Person: Ms. M.M. Masindi</p>
<p>Vhembe SCM Advice Centre</p> <p>Limpopo Provincial Treasury Government Building Complex Office No. E006 THOHOYANDOU, VENDA Tel: (015) 962 1752 Fax: (015) 962 1282</p> <p>Contact Person: Ms. A. Budeli</p>	<p>Mopani SCM Advice Centre</p> <p>Limpopo Provincial Treasury Private Bag X 1973 GIYANI, 0826 Tel: (015) 812 0149 Fax: 086 219 7905</p> <p>Contact Person: Mr. M. B. Mbedzi</p>
<p>Waterberg SCM Advice Centre</p> <p>Limpopo Provincial Treasury 98 Nelson Mandela Street Decimale Building MODIMOLLE Tel: (014) 717 5837 Fax: (014) 717 5670</p> <p>Contact Person: Mr. P.E. Mogoroga</p>	<p>Sekhukhune SCM Advice Centre</p> <p>Limpopo Provincial Treasury Lefa Centre, Schoonoord Road JANE FURSE Tel: (013) 265 1344 Fax: (013) 265 1354</p> <p>Contact Person: Mr. M.S. Sehale</p>

ANNEXURE 4: ADDRESS LIST AND CONTACT DETAILS: SATELLITE OFFICES

(Tender bulletins are obtainable from the following centers)

CAPRICORN	VHEMBE	MOPANI	WATERBERG	SEKHUKHUNE
Lebowakgomo LIBSA	Dzanani Revenue Office Tel. No. (015) 970 4969	Namakgale Revenue Office Tel. No. (015) 761 3119	LIBSA Thabazimbi: No.08 Riet Bok Street Tel. No. (014) 772 2437	Tubatse LIBSA Tubatse Municipality Tel. No. (013) 231 8530
Seshego (Economic Dev. Offices Zone 8) Tel. No. (015) 223 7990	Malamulele Revenue Office Tel. No. (015) 871 0608	Ritavi DCO Tel. No. (015) 303 0455	LIBSA Lephalale No. 3A Venter Street Tel. No. (014) 763 2834	Fetakgomo LIBSA Fetakgomo Municipality Tel. No. (015) 622 8904
Ga-Thoka (Department of Economic Development)	Musina Revenue Office Tel. No. (015) 534 2713	Naphuno Magistrate Office Tel. No. (015) 355 4972	Bela-Bela Local Municipality (Bela-Bela) Tel. No. (014) 736 8000	Atok Thusong Service Centre Atok
Senoamadi Complex- Morebeng next to Taxi Rank-Economic Development Offices Contact Mr. Pheha @ 084 602 423	Mutale Revenue Office Tel. No. 072 252 7153	Lulekani Magistrate Offices Tel. No. (015) 783 0486	Mookgophong Local Municipality (Mookgopong) Tel. No. (014) 743 1111	Maatla-ke batho LIBSA Marblehall Tel. No. (013) 261 2642
Bochum: LIBSA	Soutpansberg Revenue Office Tel. No. (015) 516 0002	Economic Development Offices in Tzaneen 20b Peace Street, Cnr Peace and Hermanus Tel. No. (015) 307 1195	LIBSA Mokopane 90 Retief Street Tel. 015 491 8582 Fax: 015 491 8584	SEDA Groblersdal Tel. No. (013) 262 3651
Mathabatha Tribal Authority Ga-Mathabatha	Tshilwavhusiku Revenue Office (015) 571 5277	Bolobedu Revenue Office Tel. No. (015) 328 3377		
Mafeke Tribal Authority MAFEFE	Tshitale Revenue Office Tel. No. (015) 975 1717	Hlanganani Revenue Office operating within Khomani Tribal Authority at Majosi. Tel. No. 072 304 3916		
	Vuwani Revenue Office Tel. No. 072 058 1910			