

TENDER BULLETIN

NO. 31/2015/16 FY

13 NOVEMBER 2015



LIMPOPO

PROVINCIAL GOVERNMENT
REPUBLIC OF SOUTH AFRICA

Provincial Supply Chain Management Office

TABLE OF CONTENTS

| | Page No. |
|--|----------|
| 1. REPORTING FRAUDULENT AND CORRUPT ACTIVITIES..... | 03 |
| 2. INSTRUCTIONS..... | 04 |
| 3. BID INVITATIONS FOR SUPPLIES, SERVICES AND DISPOSALS | 05-06 |
| 5. SPECIAL NOTICES..... | 07-10 |
| ANNEXURE 1: ADDRESS LIST AND CONTACT DETAILS: PROVINCIAL DEPARTMENTS..... | 11 |
| ANNEXURE 2: ADDRESS LIST AND CONTACT DETAILS: PUBLIC ENTITIES..... | 12 |
| ANNEXURE 3: ADDRESS LIST AND CONTACT DETAILS: PROVINCIAL TREASURY TENDER ADVICE CENTRES | 13 |
| ANNEXURE 4: ADDRESS LIST AND CONTACT DETAILS: SATELLITE OFFICES | 14 |

REPORT

FRAUDULENT & CORRUPT ACTIVITIES ON GOVERNMENT PROCUREMENT SYSTEM

National Anti-Corruption @ 0800 701 701

**Security and Investigating Services – Limpopo Provincial Treasury
@ 015 298 7196**

ALL COMPLAINTS/CONCERNS RELATED TO SCM NON-COMPLIANCE

MUST BE REPORTED TO:

THE SENIOR MANAGER

LIMPOPO PROVINCIAL TREASURY

PRIVATE BAG X 9486

POLOKWANE

0700

Tel No: 015 291 8705

ATTENTION: MAHLATJI MD

OFFICE NO. 216

OFFICE HOURS: 7H30-16H30

PROVINCIAL TREASURY, FINANCE HOUSE

56 – 58 PAUL KRUGER STREET

POLOKWANE

2. INSTRUCTIONS

1. Bidders are advised to read the entire tender bulletin.
2. Tenders for procurement of supplies, services and disposals are categorized as follows:

SUPPLIES

- Accommodation, leasing of
- Audio visual equipment
- Building material
- Chemicals: Agricultural/Forestry/Laboratory/Water Care
- Clothing/Textiles
- Computer equipment
- Computer software
- Electrical equipment
- Electronic equipment
- Furniture
- General
- Medical
- Office equipment: Labour-saving devices
- Perishable provisions
- Stationary/printing
- Steel
- Timber
- Vehicle (all types)
- Workshop equipment

SERVICES

- Building
- Civil
- Electrical
- Functional (including cleaning-, and security services)
- General
- Maintenance of electrical, mechanical equipment and plumbing
- Mechanical
- Professional
- Repair and maintenance of vehicles
- Transport

DISPOSALS

- Clothing and textiles
- Furniture
- General
- Scrap metal
- Vehicles

3. Bid documents are generally available in English only.
4. The address where a bid document is available from and where it must be submitted to may differ.
5. The addresses at which bid documents may be obtained and to which tenders must be posted, appear in Annexure 1.
6. The address list of various Supply Chain Management Tender Advice Centers at which bid documents and tender bulletins may also be obtained, appear in Annexure 3; and
7. The address list of Supply Chain Management satellite offices at which tender bulletins may also be obtained, appear in Annexure 4.

3. BID INVITATIONS FOR SUPPLIES, SERVICES AND DISPOSALS

| BID NO. | DESCRIPTION OF SERVICE OR SUPPLIES | CONTACT DETAILS | BID DOCUMENT PRICE (NON-REFUNDABLE) | DUE AT 11H00 | BID DOCUMENTS OBTAINABLE FROM | POST OR DELIVER BIDS TO |
|--------------|--|---|-------------------------------------|--------------|------------------------------------|-------------------------|
| | | | | | See Annexure 1 & 2 Page 11 – 12 | |
| ACDP 14/21 | <p>Supply, Delivery and Offloading of fencing material for Limpopo Department of Agriculture and Rural Development for period of three years</p> <p>COMPULSORY BRIEFING SESSION</p> <p>Date: 30 November 2015</p> <p>Venue: 67/69 Biccard Street, Agrivillage 1 Boardroom Department of Agriculture and Rural Development</p> <p>10H00</p> <p>Department of Agriculture and Rural Development</p> | <p>BIDDING PROCESS</p> <p>Me. Matodzi S @015 294 3351 or Email at matodzis@agric.limpopo.gov.za</p> <p>TECHNICAL ASPECTS</p> <p>Mr. Wessels DG @ 015 294 3348 or Email at wesselsdg@agric.limpopo.gov.za</p> | R 80.00 | 15/12/2015 | 111 | 111 |
| LPT 004/2015 | <p>Appointment of Consultant to develop a Business Continuity Plan</p> <p>COMPULSORY BRIEFING SESSION</p> <p>Date: 26 November 2015</p> <p>Venue: Ismini Towers 46 Hans Van Rensburg Street Polokwane</p> <p>10H00</p> <p>Limpopo Provincial Treasury</p> | <p>BIDDING PROCESS</p> <p>Mr. Baloyi MO @ 015 298 7000</p> <p>TECHNICAL ASPECTS</p> <p>Ms. Mngadi NP @ 015 298 7000</p> | R 80-00 | 14/12/2015 | 101 | 101 |

NATIONAL LOTTERIES COMMISSION



REQUEST FOR PROPOSAL

| Bid Number | Description of Bid | Closing Date & Time | Enquiry Details |
|--------------|---|--------------------------|--|
| RFP 013/2015 | Appointment of a service for Provision of Security Guards for National Lotteries Board Limpopo (Polokwane) Office | 30 November 2015 @ 11:00 | Enquiries should be in writing and may be directed to Ms. Penelope Soyingwa at Penelope@nlb.org.za Tel: 012 432 1414 Technical Enquiries to Mzamo Kabanyane at Mzamo@nlb.org.za Tel: (012) 432 1494 |

Bidders are requested to obtain the bid documents by sending an e-mail to penelope@nlb.org.za. Or lucky@nlb.org.za

Bid Submission: Bid documents must be hand delivered at the Main Entrance of the National Lotteries Commission, **No 5 Landros Mare Street Polokwane 0699. Late submissions will not be accepted**

The NLB reserves the right not to accept any proposal

5. SPECIAL NOTICES



ROADS AGENCY LIMPOPO

“Together For Better Roads”

REGISTRATION NO. (2001/025832/07)

Invitation to Register on Database

Application for Inclusion in the Database: Civil, Social, IT & Communications and Legal Services

Roads Agency Limpopo SOC Ltd is a State-owned company (SOC) established under an act of Parliament, the Provincial Roads Amendment Act, Act 03 of 2001. The company falls under the Limpopo Government Department of Public Works with the MEC for Public Works as the shareholder.

The primary activity of Roads Agency Limpopo SOC Ltd is the planning and design, construction and maintenance of provincial roads in Limpopo.

The Roads Agency Limpopo SOC Ltd would like to update the database in the following fields:

- Emerging Contractors grade 1-4CE
- Civil
- Road Markings
- Materials
- Construction Contractors
- Social and Consulting services
- HR & Labour Relations Services
- Communications & Information Technology
- Marketing, Media & Public Relations
- Legal & Contract Services
- Procurement & Supply chain management expert

Kindly take note that those who are currently on the RAL database must also apply, a gap has been identified on the database applications which closed on 01 August 2014, hence this advert.

Closing date: 10 December 2015

The application forms are available from RAL's offices (26 Rabe Street, Polokwane) from 05 October 2015 between 08:00 and 16:30 from Monday to Friday or alternatively on RAL website at www.ral.co.za (log on to the website, click on “Tenders” and go to “Documents”).

Enquiries for more information may be directed to the following RAL officials:

| Division/Field | Contact Name | Contact Details |
|-----------------------|---------------------|------------------------|
| Supply Chain | Mr M Dinala | Tel. (015) 284-4628 |
| | Ms. M Rangoato | Tel. (015) 284-4657 |

5.2 CENTRAL SUPPLIER DATABASE ROADSHOWS

RE-APPLICATION FOR THE ADVERTISEMENT OF CENTRAL SUPPLIER DATABASE ROADSHOWS AS PER DISTRICT:-

1. CAPRICORN SUPPLY CHAIN MANAGEMENT ADVICE CENTRE

| DATE | MUNICIPALITY | VENUE | TARGET | TIME |
|------------|----------------|------------------------------------|-----------|-------|
| 18/11/2015 | Polokwane | Mamabolo T/A | SUPPLIERS | 10H00 |
| 25/11/2015 | Lepelle-Nkumpi | Leb/kgomo Gov Complex (Education)l | SUPPLIERS | 10H00 |

For more information please contact Ms Masindi M M at Tel. 015 2918424

2. MOPANI SUPPLY CHAIN MANAGEMENT ADVICE CENTRE

| DATE | MUNICIPALITY | VENUE | TARGET | TIME |
|------------|--------------|--------------------|-----------|-------|
| 19/11/2015 | Phalaborwa | Namakgale Hall | SUPPLIERS | 10H00 |
| 26/11/2015 | Maruleng | Metz Communiy Hall | SUPPLIERS | 10H00 |

For more information please contact Mr Mbedzi M B at Tel. 015 812 0149

3. SEKHUKHUNE SUPPLY CHAIN MANAGEMENT ADVICE CENTRE

| DATE | MUNICIPALITY | VENUE | TARGET | TIME |
|------------|------------------|-------------------------------|-----------|-------|
| 26/11/2015 | Elias Motsoaledi | Elias Motsoaledi Municipality | SUPPLIERS | 10H00 |

For more information please contact Mr Sehale M S at Tel. 013 265 1344

4. WATERBERG SUPPLY CHAIN MANAGEMENT ADVICE CENTRE

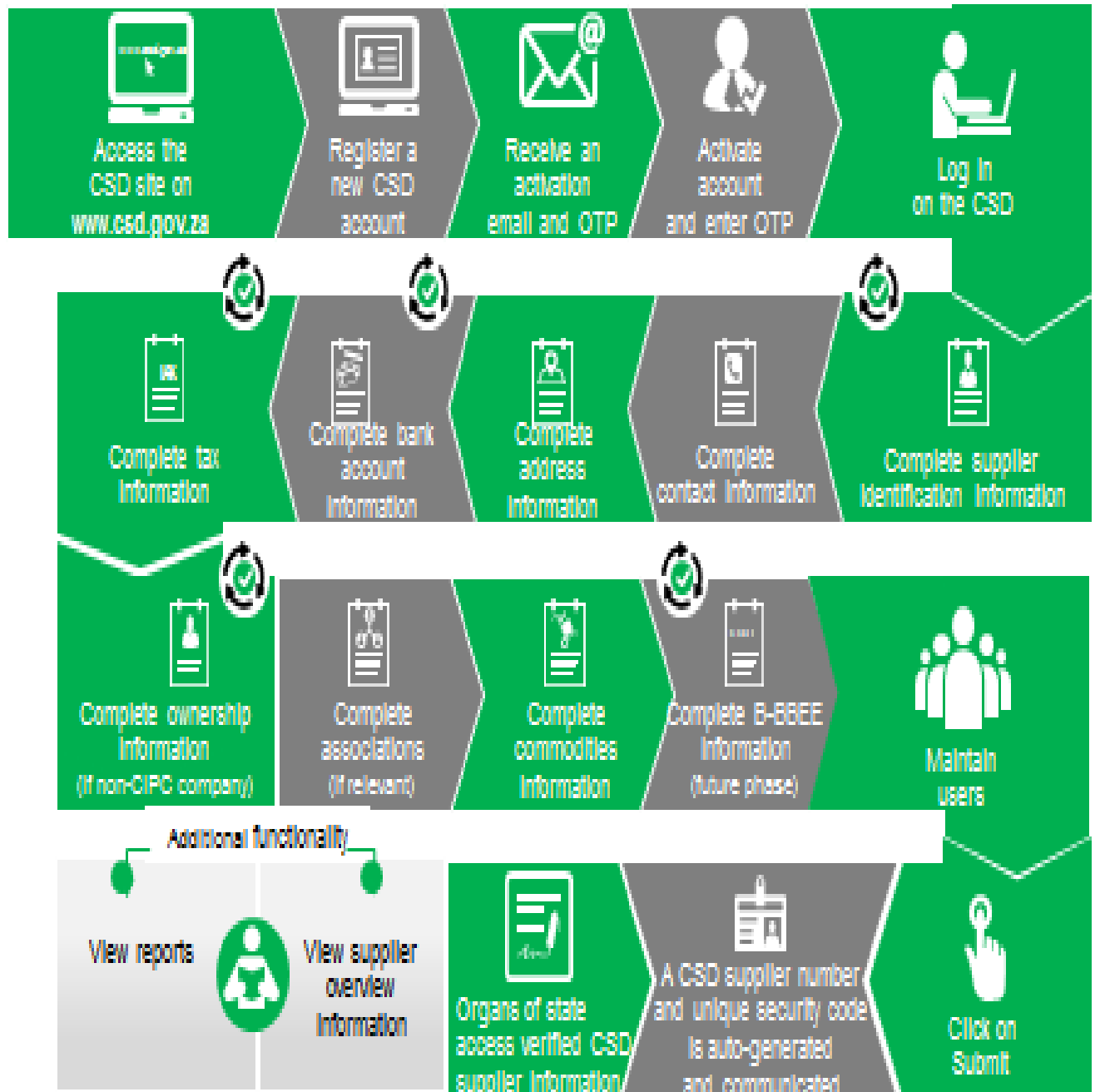
| DATE | MUNICIPALITY | VENUE | TARGET | TIME |
|------------|--------------|--------------------------|-----------|-------|
| 19/11/2015 | Thabazimbi | Public Works cost center | SUPPLIERS | 10H00 |
| 25/11/2015 | Mookgophong | Mookgophong Com. Center | SUPPLIERS | 10H00 |

For more information please contact Mr Mogoroga P E at Tel. 014 7175837

5.3 Invitation to all suppliers to register onto the National Centralised Supplier Database.

1. All suppliers are invited to come and register on the National Centralised Supplier Database. Suppliers can be assisted from the following offices with registration:
 - a) SEDA offices throughout the province
 - b) Tender Advice Centres or Provincial Treasury Offices in all the district offices. See address list at the back of the Tender Bulletin.
 - c) All government offices where there are SCM office, there are people assigned to assist suppliers with registration onto the database.

Supplier Self-Registration Process



Ⓜ Auto verification of supplier information with SARS, GPC etc

LIMPOPO PROVINCIAL TENDER BULLETIN NO. 31/2015/16 FY, 13 NOVEMBER 2015

ANNEXURE 1: ADDRESS LIST AND CONTACT DETAILS: LIMPOPO PROVINCIAL DEPARTMENTS

| UNIQUE REF. NO. | BID DOCUMENT REFERENCE | CONTACT DETAILS | DOCUMENTS SOLD AT: | DOCUMENTS DEPOSITED AT |
|-----------------|------------------------|---|--|---|
| 100 | DSDP | Tel: 015 293 6000 Fax: 015 293 6211 Website: www.limpopo.gov.za | Department of Social Development , Office No. D3 Ground Floor, Old Capricorn Building, 18 College Street, POLOKWANE and all Provincial Treasury Tender Advice Centers | Deposited in the box located at Department of Health and Social Development, 18 College Street, Polokwane |
| 101 | LPT | Tel: 015 298 7000 Fax: 015 295 7010 Website: www.limpopo.gov.za | Provincial Treasury 56 – 58 Paul Kruger Street, POLOKWANE and all Provincial Treasury Tender Advice Centers | Deposited in the bid box located outside a guard house at Ismini Towers, 46 Hans Van Rensburg Street, Polokwane |
| 101A | TC/LP | Tel: 015 291 8400 Fax: 015 295 3310 Website: www.limpopo.gov.za | Provincial Treasury 56 – 58 Paul Kruger Street, POLOKWANE and all Provincial Treasury Tender Advice Centers | Deposited in the bid box located in the main entrance, Finance House Building, 56-58 Paul Kruger Street, Polokwane |
| 102 | PRDP | Tel: 015 287 6000 Fax: 015 295 3840 Website: www.limpopo.gov.za | Office of the Premier , 40 Hans van Rensburg Street, POLOKWANE and all SCM Advice Centers | Deposited in the bid box located at Mowaneng Building, 40 Hans van Rensburg Street, Polokwane |
| 103 | HEDP | Tel: 015 293 6000 Fax: 015 293 6211 Website: www.limpopo.gov.za | Department of Health , Office No. D3 Ground Floor, Old Capricorn Building, 18 College Street, POLOKWANE and all Provincial Treasury Tender Advice Centers | Deposited in the box located at Department of Health and Social Development, 18 College Street, Polokwane |
| 104 | LPEDT | Tel: 015 290 7600/1 Fax: 015 297 4494 Website: www.limpopo.gov.za | Department of Education , Corner 113 Biccadd and 24 Excelsior Streets, POLOKWANE and all Provincial Treasury Tender Advice Centers | Deposited in the bid box located in the main entrance of corner 113 Biccadd Street and Excelsior Street, Polokwane |
| 105 | PUDP | Tel: 015 295 1000 Fax: 015 295 1163 Website: www.limpopo.gov.za | Department of Roads & Transport , 40 Paul Kruger Street, POLOKWANE and all Provincial Treasury Tender Advice Centers | Deposited in the bid box located at 1 st Floor, Paul Kruger Wing, 40 Paul Kruger Street, Polokwane |
| 106 | DSSL | Tel: 015 290 2900 Fax: 015 291 4452 Website: www.limpopo.gov.za | Department of Safety, Security and Liaison , 32 Schoeman Street, POLOKWANE and all Provincial Treasury Tender Advice Centers | Deposited in the bid box located in the main entrance of 32 Schoeman Street, Polokwane |
| 107 | COGHSTA | Tel: 015 294 2000 Fax: 015 295 4190 Website: www.limpopo.gov.za | Department of Co-Operative Governance, Human Settlements & Traditional Affairs , 28 Market Street, Office No. G 74, Ground Floor, Polokwane. | Deposited in the bid box located at Hensa Towers, Cnr of Rabe and Landdros Mare Streets, Polokwane |
| 108 | DSAC | Tel: 015 284 4000 Fax: 015 284 4514 Website: www.limpopo.gov.za | Department of Sport, Arts and Culture Olympic Towers, Corner Rabe and Biccadd Street, POLOKWANE and all Provincial Treasury Tender Advice Centre | Deposited in the bid box located in the main entrance of Olympic Towers, Corner 21 Rabe and Biccadd Street, Polokwane |
| 109 | LEDET | Tel: 015 293 8300 Fax: 015 293 8319 Website: www.limpopo.gov.za | Department of Economic Development, Environment & Tourism , 90 Bok Street, POLOKWANE and all SCM Advice Centers | Deposited in the bid box located in the main entrance of Evridiki Towers, 20 Hans Van Rensburg Street, Polokwane |
| 110 | LDPW & WODP | Tel: 015 284 7000 Fax: 015 284 7031 Website: www.limpopo.gov.za | Department of Public Works , Works Towers, 43 Church Street, POLOKWANE and all Provincial Treasury Tender Advice Centers | Deposited in the bid box located at Corner Blaawberg and River Street Ladanna Polokwane 0699 Private Bag X9490 Polokwane 0700 |
| 111 | ACDP | Tel: 015 294 3000/30/60/90/20 Fax: 015 294 4506 Website: www.limpopo.gov.za | Department of Agriculture , Temo Towers, 69 Biccadd Street, POLOKWANE and all Provincial Treasury Tender Advice Centers | Deposited in the bid box located in the main entrance of AgriVillage, 69 Biccadd Street, Polokwane |

ANNEXURE 2: ADDRESS LIST AND CONTACT DETAILS: LIMPOPO PUBLIC ENTITIES

| UNIQUE REF. NO. | BID DOCUMENT REFERENCE | CONTACT DETAILS | DOCUMENTS SOLD AT: | DOCUMENTS DEPOSITED AT |
|-----------------|------------------------|--|---|---|
| 112 | RFB: LIMP | Tel: 015 293 3621 Fax: 015 293 3660 Website: www.golimpopo.co | State Information Technology Agency (SITA) Limpopo Office, Moolman Building, 27 Market Street, POLOKWANE, 0699 | Bid box located in the Main Entrance of Moolman Building, 27 Market Street, Polokwane |
| 113 | LTA | Tel: 015 293 3600 Fax: 015 293 3655 Website: www.golimpopo.com | Limpopo Tourism Agency , ERF 92/688, Portion 2 Southern Gateway, Ext 4, N1 Main Road, Polokwane 0699 | Bid box located in the offices ERF 92/688, Portion 2 Southern Gateway, Ext 4, N1 Main Road, Polokwane 0699 |
| 114 | LGB | Tel: 015 295 5581 Fax: 015 295 3566 Website: www.lgb.org | Limpopo Gambling Board , 08 Hans van Rensburg Street, POLOKWANE, 0700 from 08H30 to 16H00 | Bid box located in the main entrance, ground floor, 08 Hans van Rensburg Street, Polokwane 0700 |
| 115 | TIL | Tel: 015 295 5171 Fax: 015 295 5197 Website: www.til.co.za | Trade and Investment Limpopo 130A Marshall Street, POLOKWANE, 0699 | Bid box located in the main entrance, ground floor, 130 A Marshall Street, Polokwane |
| 116 | LIBSA | Tel: 015 287 3000 Fax: 015 297 6732 Website: www.libsa.co.za | Limpopo Business Support Agency , 06 Platinum Street, Ladine, POLOKWANE, 0700 | Bid box located in the main entrance, 06 Platinum Street, Ladine, Polokwane |
| 117 | RAL | Tel: 015 284 4600 Fax: 015 284 4701 Website: www.ral.co.za | Road Agency Limpopo (RAL) , RAL Towers, 26 Rabe Street, POLOKWANE, 0700 | Bid box located in the entrance foyer (ground floor) of RAL Towers, at 26 Rabe Street, Polokwane |
| 118 | LADC | Tel: 015 296 3543 Fax: 015 296 3549 Website: www.limpopo.gov.za | Limpopo Agribusiness Development Corporation , 29 Rhodes Drist Street, Bendor, POLOKWANE, 0699 | Bid box located in the main entrance, 29 Rhodes Drist Street, Bendor, Polokwane, |
| 119 | GAAL | Tel: 015 288 0122 Fax: 015 288 0346 Website: www.gaal.co.za | Gateway Airports Authority Limited , N1 Road to Louis Trichardt, Army Base, POLOKWANE International Airport, Polokwane, 0700 | Bid box located in the main entrance, ground floor of administration building, Polokwane International Airport, Army Base |
| 120 | VIVET | Tel: 015 963 3156 Fax: 015 963 3154 Website: www.fetcol@mweb.co.za | Vhembe FET College , Stand No. 203, Unit A, Sibasa, 0970, Limpopo Province | Vhembe FET College, Central Office, Private Bag X2136, SIBASA 0970 |
| 121 | WTVET | Tel: 015 491 8581 / 8602 Fax: 015 491 8579 Website: www.procurement@waterbergcollege.co.za | Waterberg FET College , Central Office, 36 Hooge Street, Mokopane 0600 | Waterberg FET College , Central Office, 36 Hooge Street, Mokopane Private Bag X 2449, Mokopane 0600 |

ANNEXURE 3: ADDRESS LIST AND CONTACT DETAILS: PROVINCIAL TREASURY TENDER ADVICE CENTRES

(Tender bulletins and bid documents are obtainable from the following Centers):

| PROVINCIAL TREASURY SUPPLY CHAIN MANAGEMENT ADVICE CENTRES | |
|---|---|
| <p>HEAD OFFICE</p> <p>Provincial Supply Chain Management Office 56 & 58 Paul Kruger Street POLOKWANE Private Bag x9494 POLOKWANE, 0700 Tel No. (015) 291 8400</p> <p>Contact: Ms. M.B. Malope @ Tel: 015 291 8717/6</p> | <p>Capricorn SCM Advice Centre</p> <p>Limpopo Provincial Treasury 56 & 58 Paul Kruger Street Private Bag x9494 POLOKWANE, 0700 Tel No. (015) 291 8400</p> <p>Contact Person: Ms. M.M. Masindi</p> |
| <p>Vhembe SCM Advice Centre</p> <p>Limpopo Provincial Treasury Government Building Complex Office No. E006 THOHOYANDOU, VENDA Tel: (015) 962 1752 Fax: (015) 962 1282</p> <p>Contact Person: Ms. A. Budeli</p> | <p>Mopani SCM Advice Centre</p> <p>Limpopo Provincial Treasury Private Bag X 1973 GIYANI, 0826 Tel: (015) 812 0149 Fax: 086 219 7905</p> <p>Contact Person: Mr. M. B. Mbedzi</p> |
| <p>Waterberg SCM Advice Centre</p> <p>Limpopo Provincial Treasury 98 Nelson Mandela Street Decimale Building MODIMOLLE Tel: (014) 717 5837 Fax: (014) 717 5670</p> <p>Contact Person: Mr. P.E. Mogoroga</p> | <p>Sekhukhune SCM Advice Centre</p> <p>Limpopo Provincial Treasury Lefa Centre, Schoonoord Road JANE FURSE Tel: (013) 265 1344 Fax: (013) 265 1354</p> <p>Contact Person: Mr. M.S. Sehale</p> |

ANNEXURE 4: ADDRESS LIST AND CONTACT DETAILS: SATELLITE OFFICES

(Tender bulletins are obtainable from the following centers)

| CAPRICORN | VHEMBE | MOPANI | WATERBERG | SEKHUKHUNE |
|---|--|--|--|--|
| Lebowakgomo LIBSA | Dzanani Revenue Office Tel. No. (015) 970 4969 | Namakgale Revenue Office Tel. No. (015) 761 3119 | LIBSA Thabazimbi: No.08 Riet Bok Street Tel. No. (014) 772 2437 | Tubatse LIBSA Tubatse Municipality Tel. No. (013) 231 8530 |
| Seshego (Economic Dev. Offices Zone 8) Tel. No. (015) 223 7990 | Malamulele Revenue Office Tel. No. (015) 871 0608 | Ritavi DCO Tel. No. (015) 303 0455 | LIBSA Lephalale No. 3A Venter Street Tel. No. (014) 763 2834 | Fetakgomo LIBSA Fetakgomo Municipality Tel. No. (015) 622 8904 |
| Ga-Thoka (Department of Economic Development) | Musina Revenue Office Tel. No. (015) 534 2713 | Naphuno Magistrate Office Tel. No. (015) 355 4972 | Bela-Bela Local Municipality (Bela-Bela) Tel. No. (014) 736 8000 | Atok Thusong Service Centre Atok |
| Senoamadi Complex- Morebeng next to Taxi Rank-Economic Development Offices Contact Mr. Pheha @ 084 602 423 | Mutale Revenue Office Tel. No. 072 252 7153 | Lulekani Magistrate Offices Tel. No. (015) 783 0486 | Mookgophong Local Municipality (Mookgopong) Tel. No. (014) 743 1111 | Maatla-ke batho LIBSA Marblehall Tel. No. (013) 261 2642 |
| Bochum: LIBSA | Soutpansberg Revenue Office Tel. No. (015) 516 0002 | Economic Development Offices in Tzaneen 20b Peace Street, Cnr Peace and Hermanus Tel. No. (015) 307 1195 | LIBSA Mokopane 90 Retief Street Tel. 015 491 8582 Fax: 015 491 8584 | SEDA Groblersdal Tel. No. (013) 262 3651 |
| Mathabatha Tribal Authority Ga-Mathabatha | Tshilwavhusiku Revenue Office (015) 571 5277 | Bolobedu Revenue Office Tel. No. (015) 328 3377 | | |
| Mafeke Tribal Authority MAFEFE | Tshitale Revenue Office Tel. No. (015) 975 1717 | Hlanganani Revenue Office operating within Khomani Tribal Authority at Majosi. Tel. No. 072 304 3916 | | |
| | Vuwani Revenue Office Tel. No. 072 058 1910 | | | |